

*Proposal for the Roundhouse by
SSPJ Design*

EQUAL JUSTICE FOR THE PEOPLE

**The U.S.
Citizen Rights Center**

A Museum,
Research Institute,
Resource Center



Thank you

for the invitation.



Josh Koplin, Industrial Designer
Native Philadelphian



Stephanie Reyer,
Exhibition Designer
Philadelphian since 2008



Stacey B. Mann,
Interpretive Planner
and Civic Activist
Philadelphian since 2010



Paul M. Elia, AIA
Architect
*Won't tell us how long—
but a long time.*





A Story of Personal Connection

and Love for Complex and Flawed City

Why the Roundhouse?



A photograph of Independence Hall in Philadelphia, Pennsylvania, taken at sunset. The building is a three-story red brick structure with a prominent white clock tower and steeple. The sky is a mix of orange, red, and purple. An American flag is visible on the left, and a statue stands in the central entrance. The text "Grounded in History of Place" is overlaid on the right side of the image.

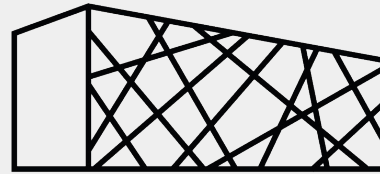
Grounded in History of Place

Our Vision

We envision the future of The Roundhouse as a space that upholds the historical ideals established 250 years ago, acknowledges the challenges we as a nation have faced in living up to those standards, and creates opportunity for current citizens to secure their own rights for the future.

A Unique Collaboration

Inspired by an international landscape of institutions dedicated to expanding public education & discourse



MUSEO DE LA MEMORIA
Y LOS DERECHOS
HUMANOS



EUROPEAN CENTER
FOR CONSTITUTIONAL
AND HUMAN RIGHTS



So, What Is Its Next Life?

A Mixed Use Civic Hub

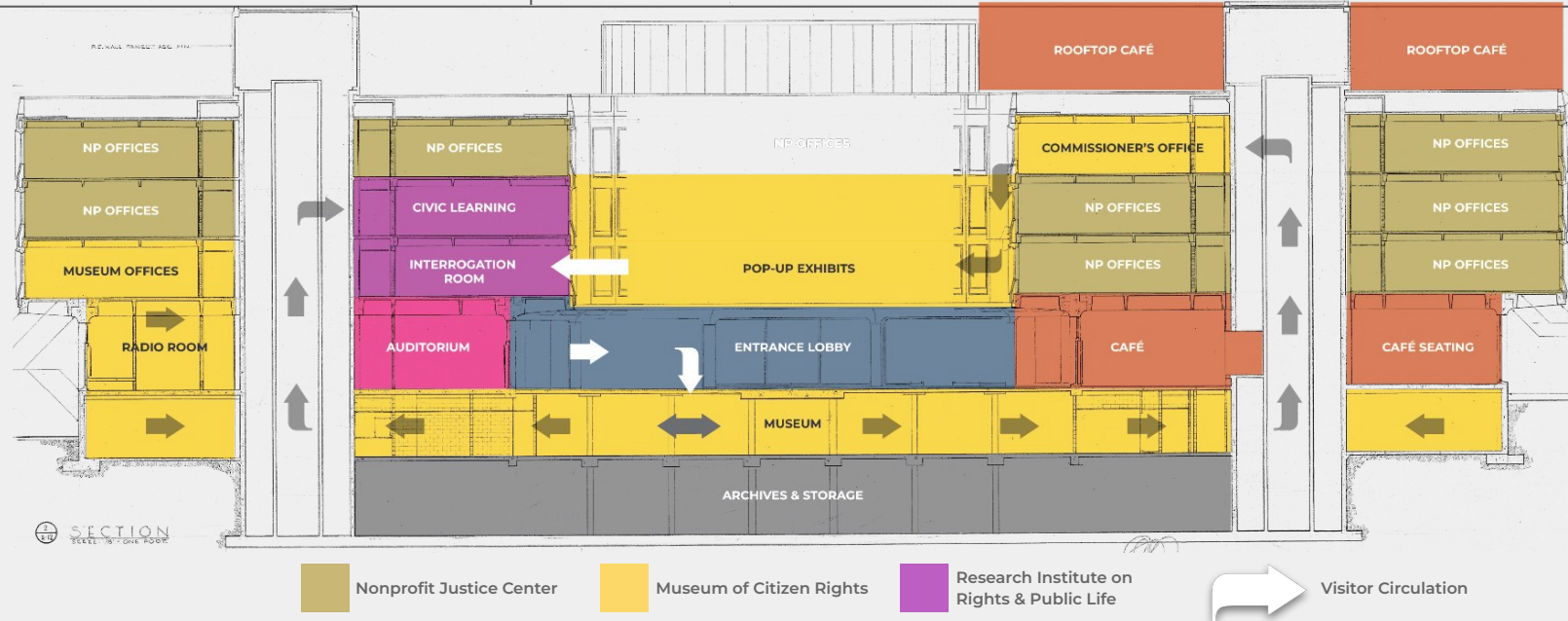
Organized around three themes:

Rights, Justice, and Civic Engagement.

A Mixed Use Civic Hub

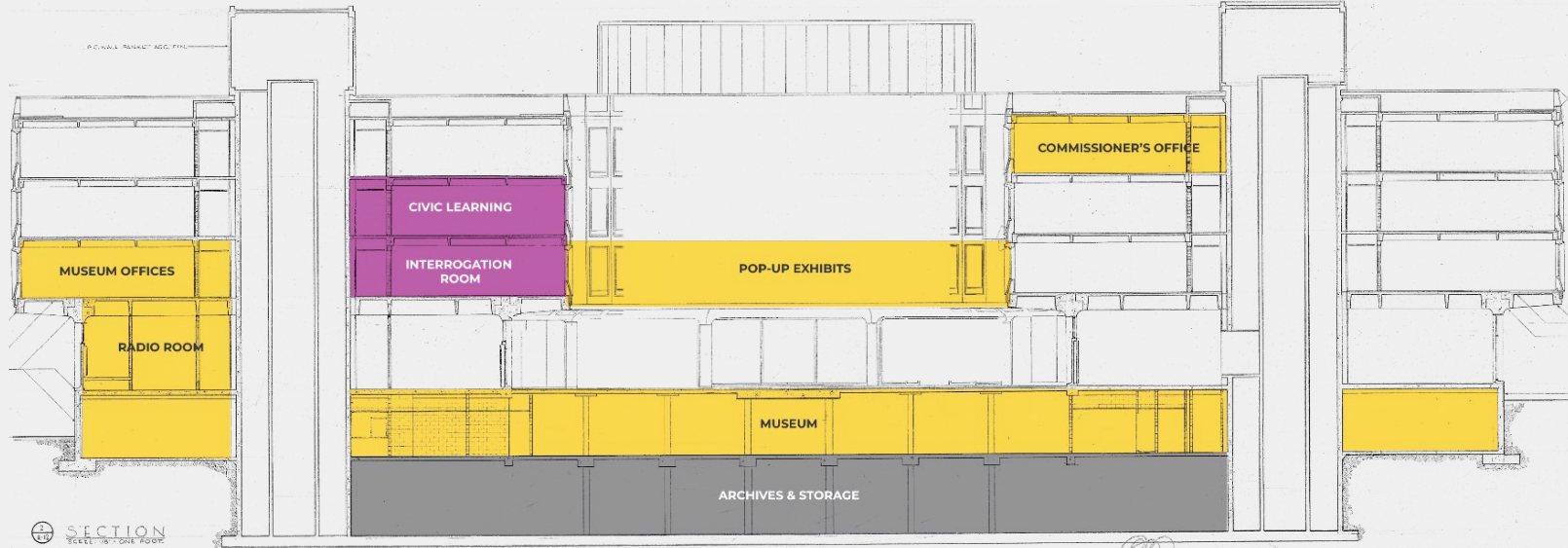
Organized around three themes:

Rights, Justice, and Civic Engagement.

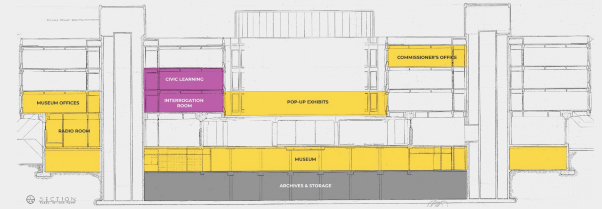


Museum of Citizen Rights

An immersive, participatory venue that **interprets the evolving rights of people** in the United States and **builds competency in the role of citizens** in understanding, securing, and upholding those rights.



Translates constitutional principles and local struggles into lived, usable knowledge, meeting visitors where they are and connecting them to action.



Making use of spaces like the radio room, auditorium, holding cells, commissioners office, interrogation rooms to interpret in-situ the rights and obligations of citizens and governments in the nurturing of a healthy democracy.

**Foundations
Gallery**

**A SHORTAGE OF 7.4 MIL
ENTAL HOMES FOR EXT
HOLDS, EVERY 100 OF**

Evicted, National Building Museum
mgmt. design

Inquiry Studio



Artist Theaster Gates

**Witness &
Repair Theater**



**Know-Your-
Rights-Lab**

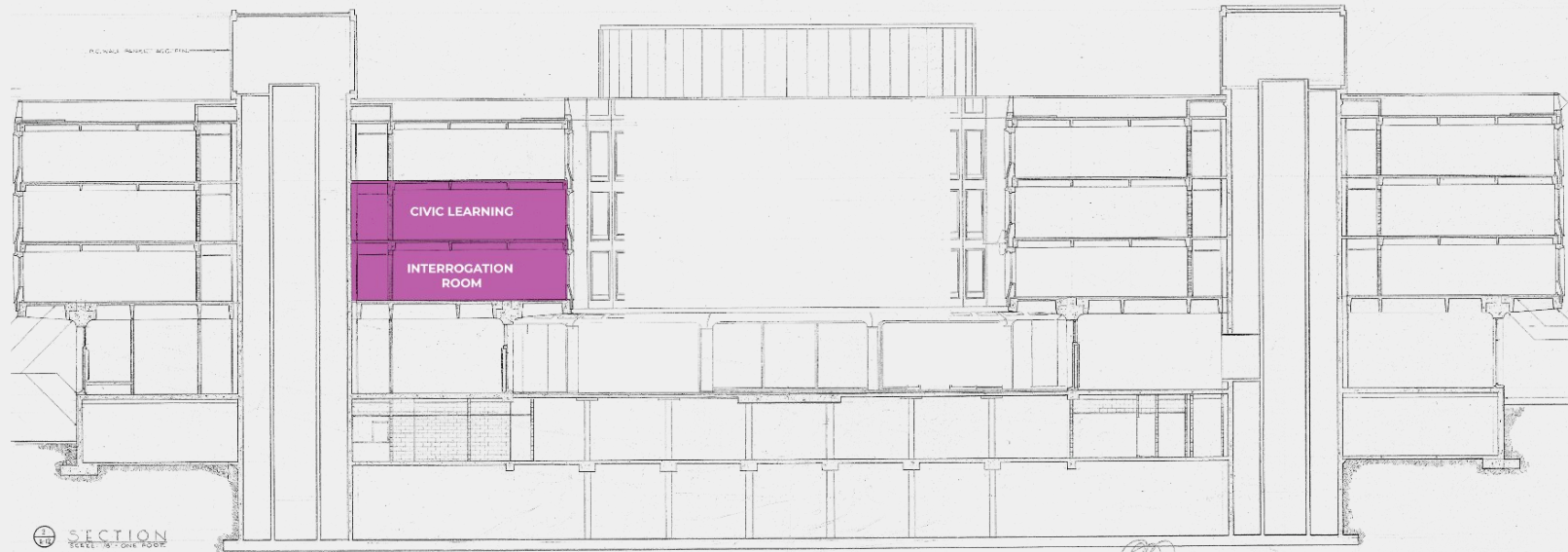


Kamil Krzaczynski via Getty Images

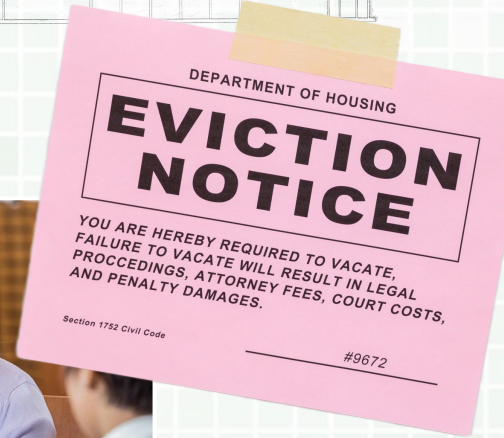
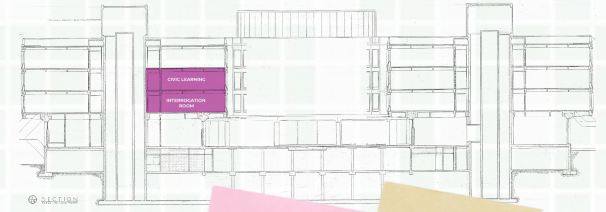


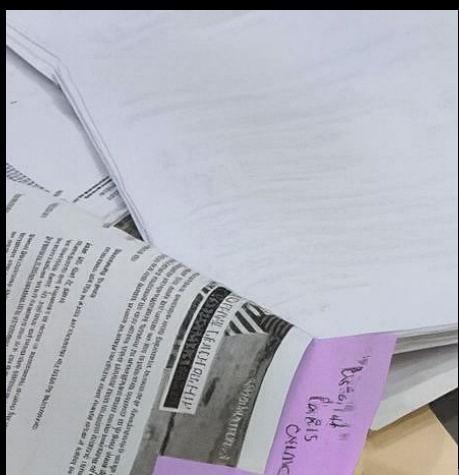
Research Institute on Rights and Public Life

Advances civic education by uniting educators and policymakers to research, design, and promote evidence-based practices that strengthen democratic understanding and participation.



Hosting scholars, teachers, and policy-makers to provide independent, policy-relevant research and public tools that improve rights protection in everyday systems.





Practice Labs



Data Commons



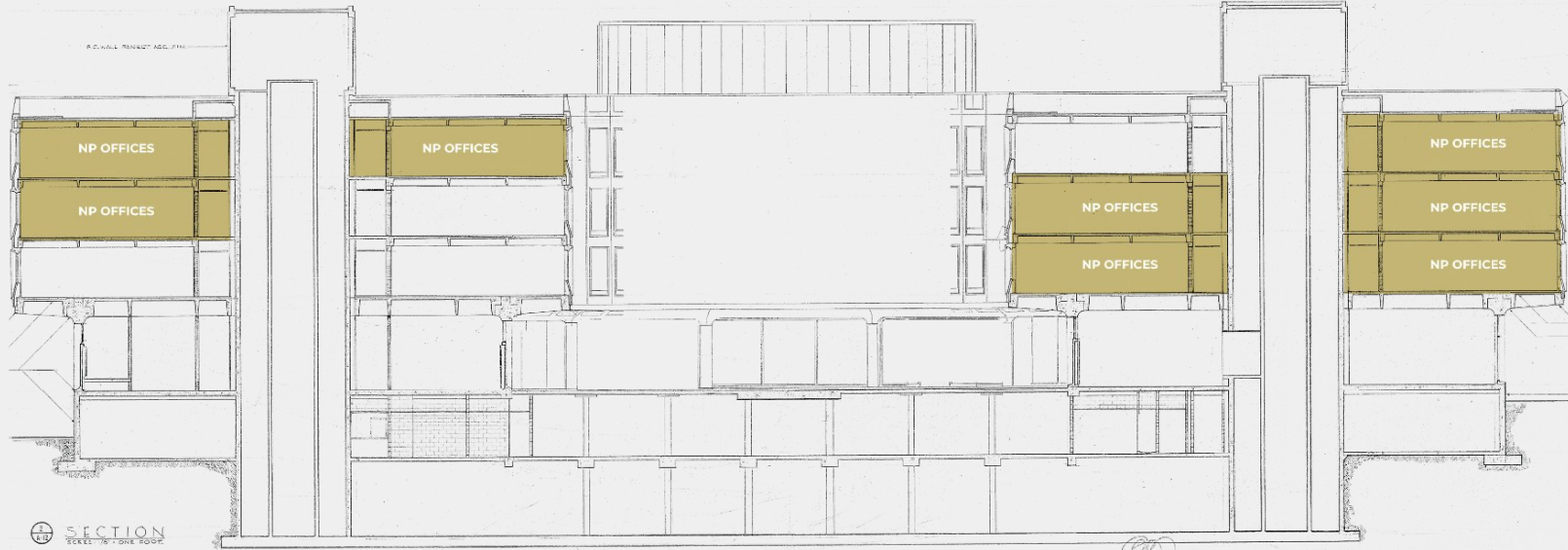
Oral History & Archives



Teaching Fellowships

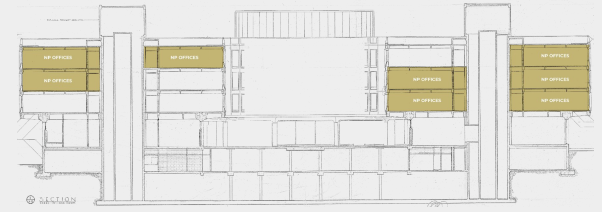
Nonprofit Justice Center

A campus of low-cost offices and shared spaces for nonprofits providing civil legal aid and related services—especially in justice, immigration, and housing



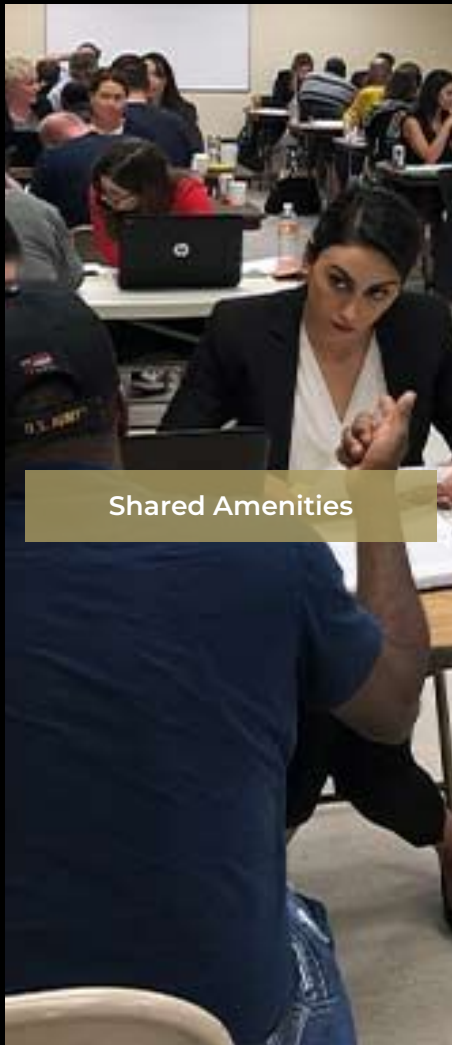
Using the Equal Justice Center proposals of 2022 as a springboard...

A co-located campus of tenant organizations providing legal services—housing, criminal, immigration, family, consumer/debt, workers’ rights—plus mediation, social work navigation, and community education.





Flexible Hot-Desking
for small organizations



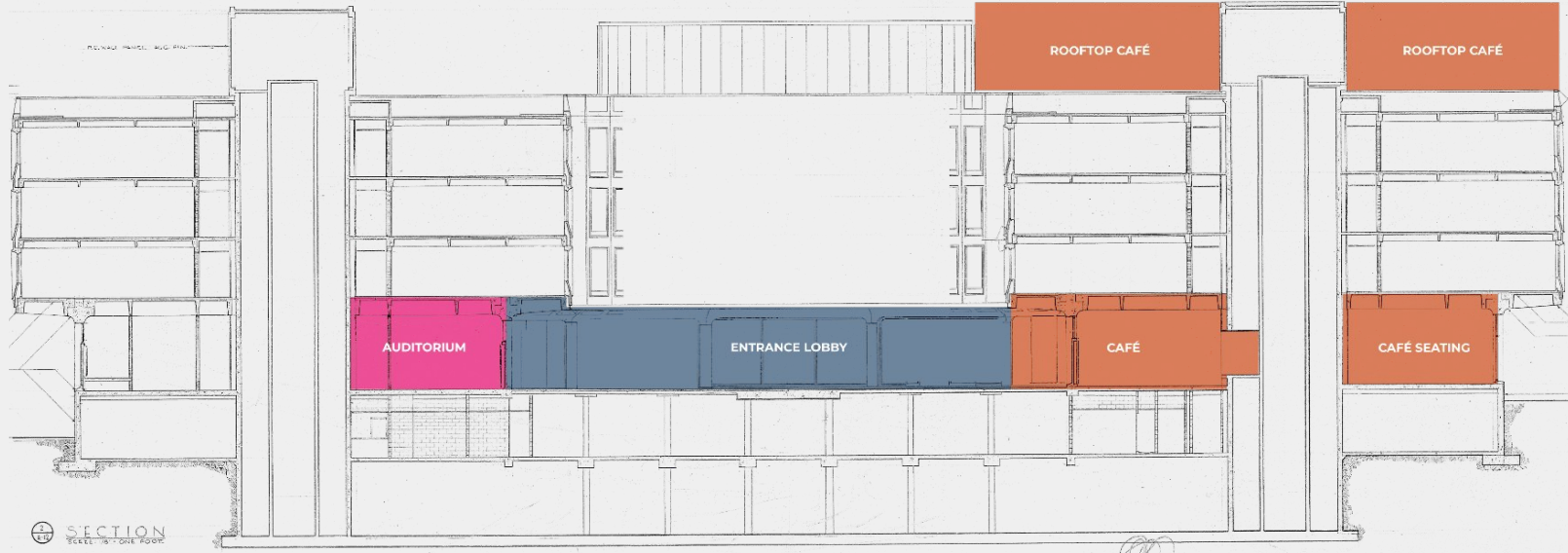
Shared Amenities

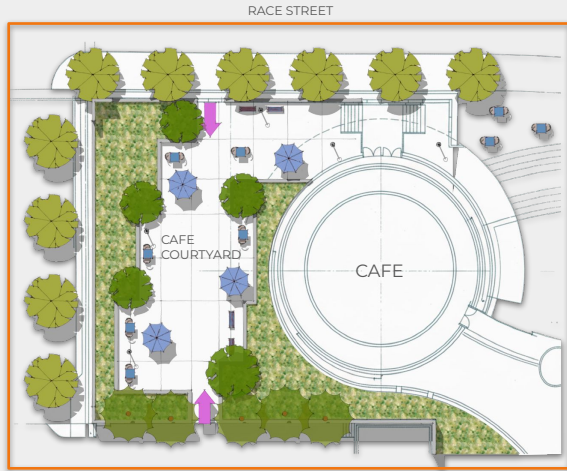


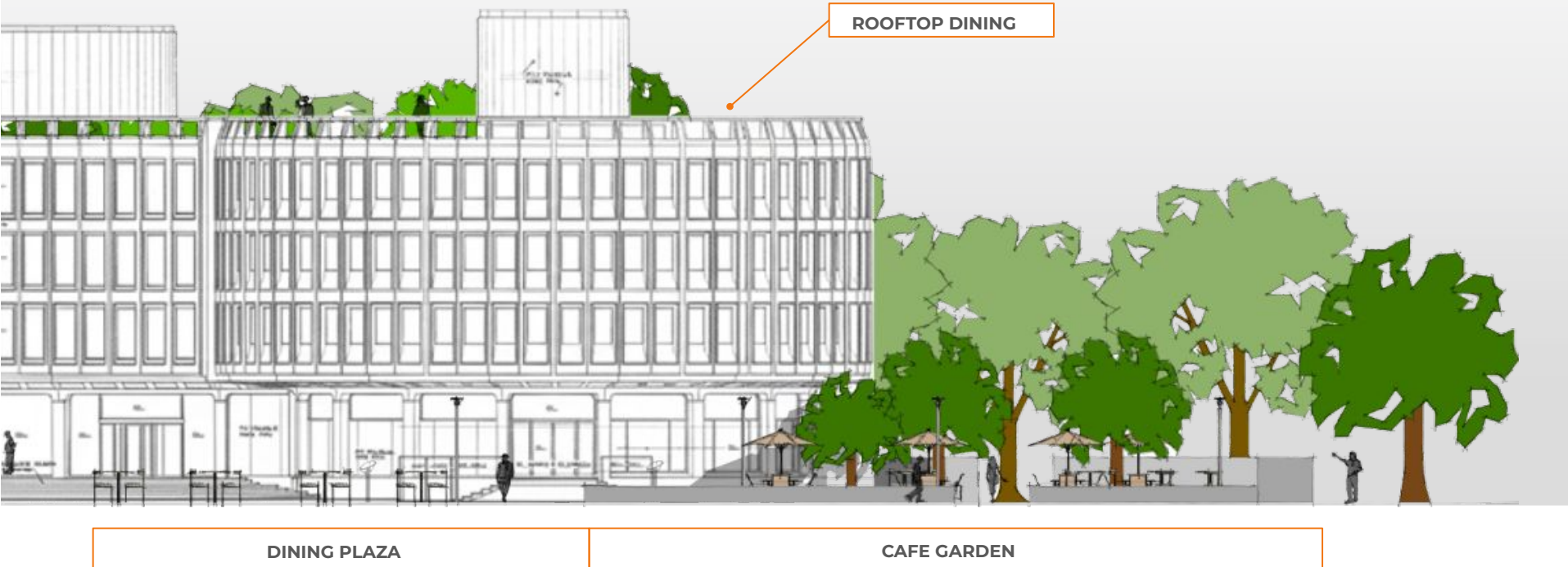
Pro Bono Resource Hub

Public Space, Cafes, and Entertainment

The Lobby, Existing Cafe and Auditorium Spaces remain and are augmented by rooftop, garden and terrace cafe and open public amenity spaces







Architecture & Preservation

1. COMPREHENSIVE BUILDING SURVEY

Assess site, exterior and interior conditions to identify opportunities, constraints, and necessary upgrades.

2. SITE IMPROVEMENTS

Ensure accessibility, address code compliance, enhance lighting, and amenities, and redesign the courtyard as a welcoming public space.

3. SELECTIVE DEMOLITION & RECONNECTION

Shorten perimeter walls to sitting height (selectively preserving a few spots) to open the site and visually connect it to Independence Mall and Franklin Square.

4. BUILDING MODERNIZATION

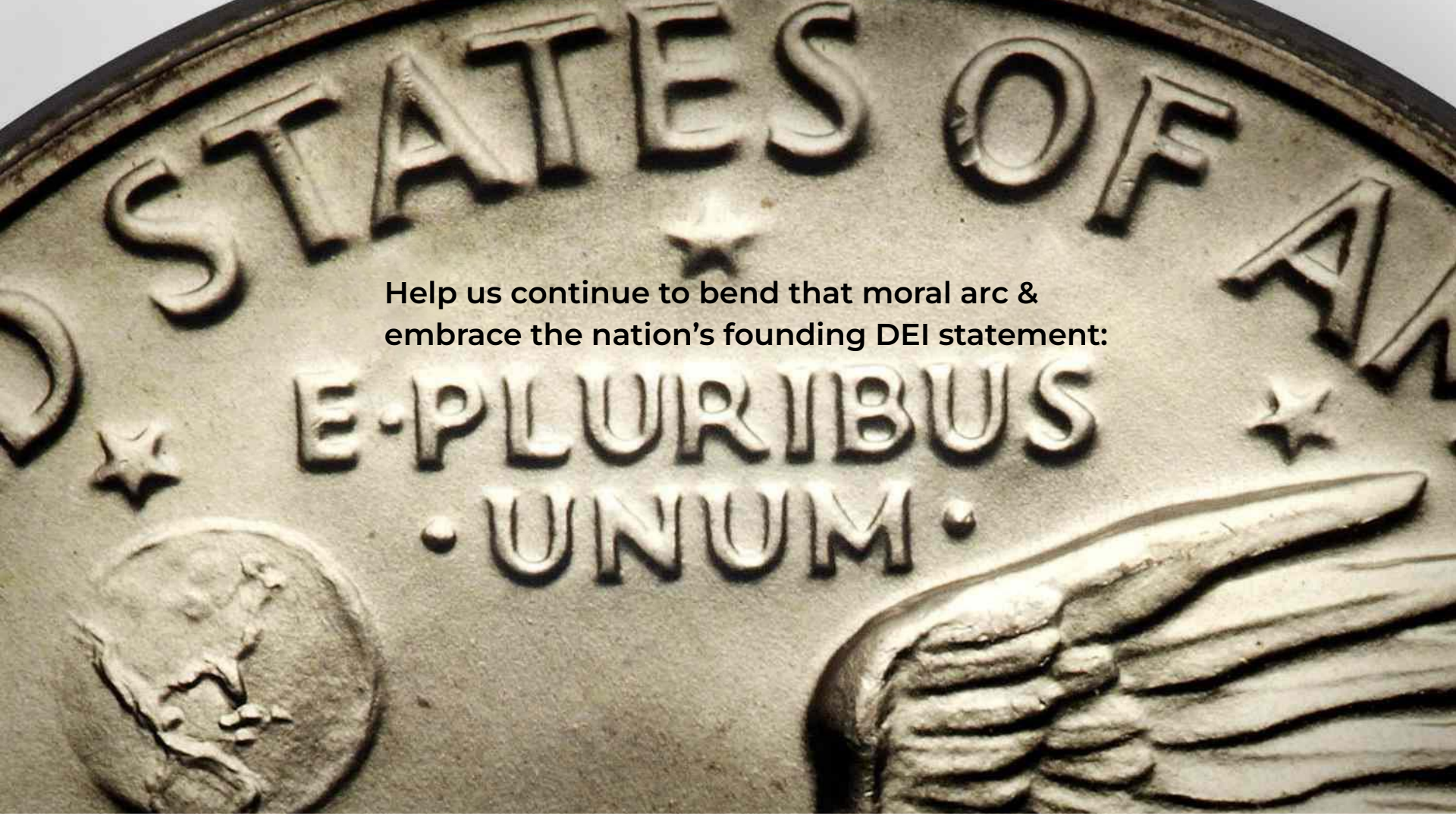
Evaluate structure, MEP systems, building envelope, hazardous materials, and ADA/code compliance to guide adaptive reuse.

5. REIMAGINED PUBLIC USE

Introduce a café, add rooftop and terrace bar/cafe and event spaces. Add classrooms, and update visitor amenities to transform the Roundhouse into a vibrant, community-centered museum.

Architectural strategy reveals the precast structure as an artifact. Adaptive re-use allows us to give new life to the site, turning it into a place for reflection, learning and connection.





Help us continue to bend that moral arc & embrace the nation's founding DEI statement:

E-PLURIBUS
UNUM.

Thank you

We invite your
questions.



Josh Koplin, Industrial Designer
Native Philadelphian



Stephanie Reyer,
Exhibition Designer
Philadelphian since 2008



Paul M. Elia, AIA
Architect
*Won't tell us how long—
but a long time.*



Stacey B. Mann,
Interpretive Planner
and Civic Activist
Philadelphian since 2010