

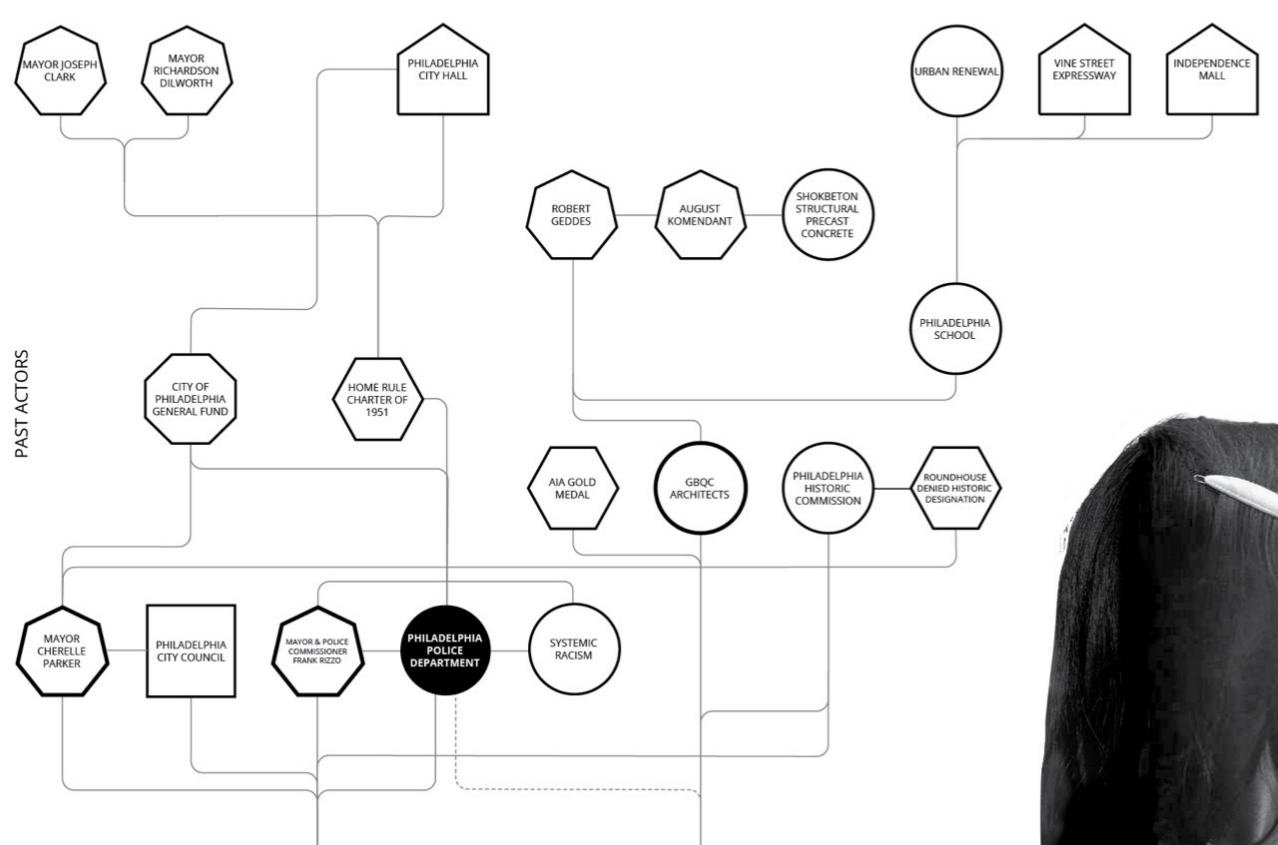
KIERAN TIMBERLAKE

The Roundhouse Becomes a Home

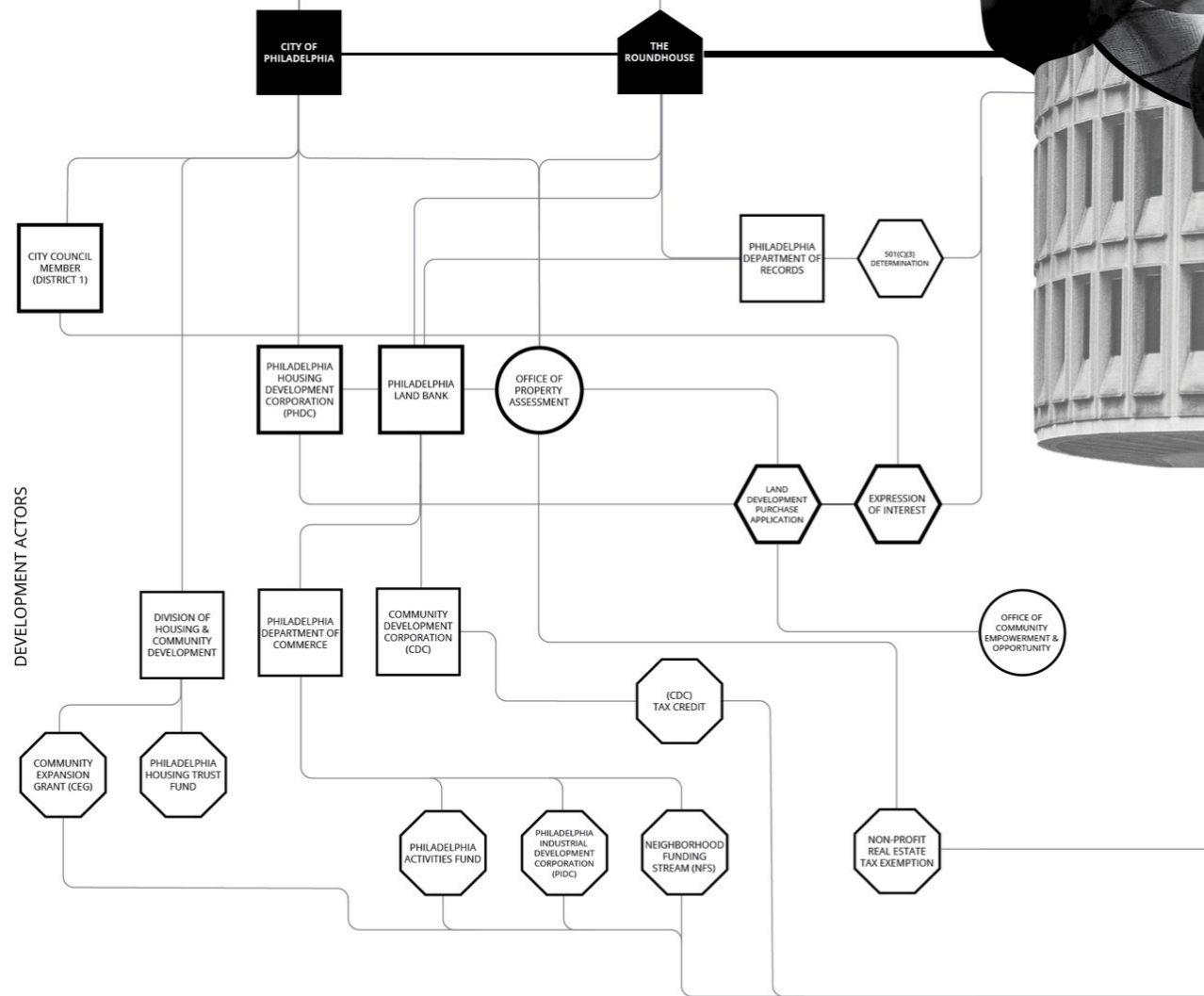




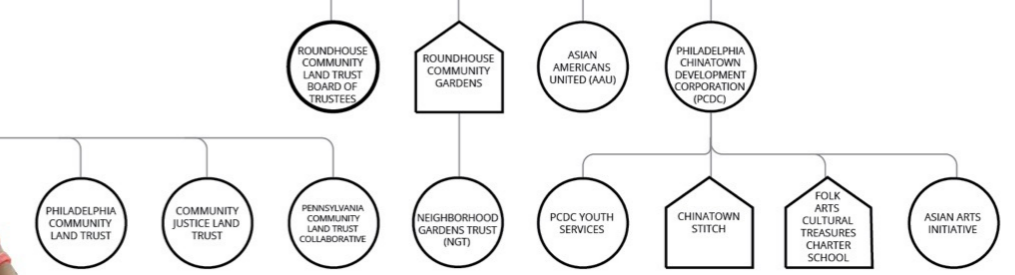
PAST ACTORS



DEVELOPMENT ACTORS



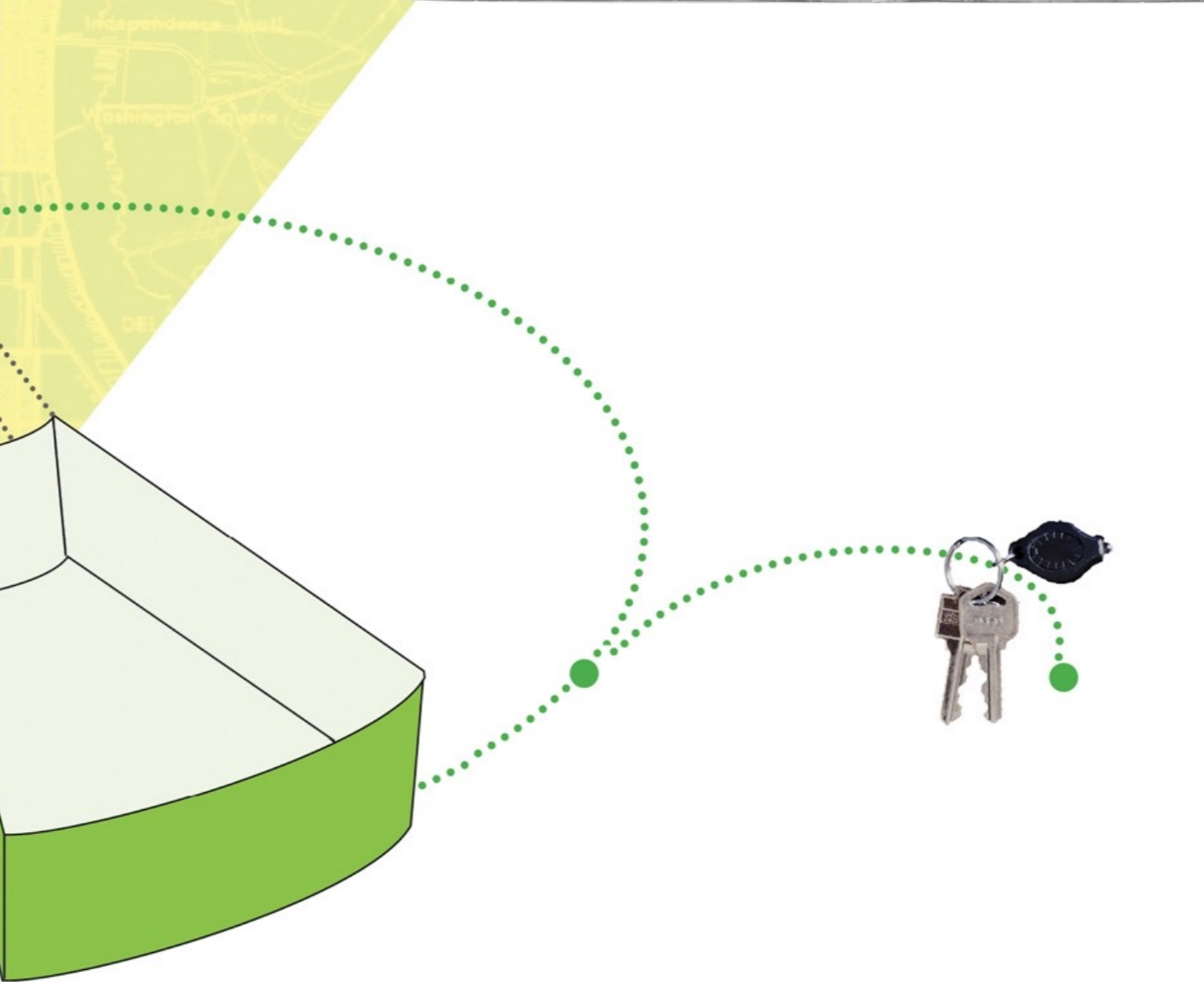
FUTURE ACTORS

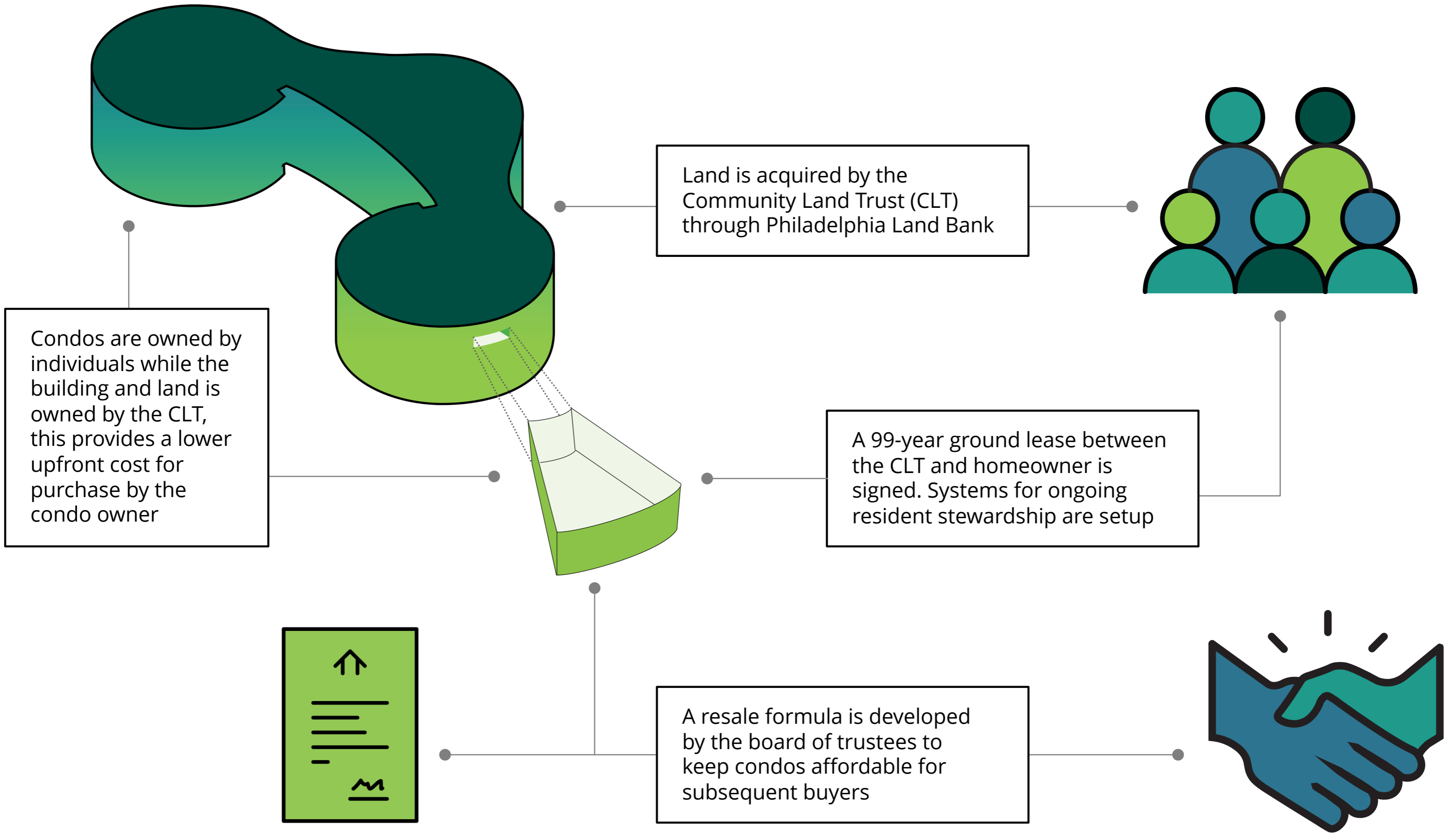


SAVE CHINATOWN

ROUNDHOUSE COMMUNITY LAND TRUST







2026

2027

2028

2029

2030

2031

2032

2033

2034

2035





PERSON



ORGANIZATION



INSTITUTION



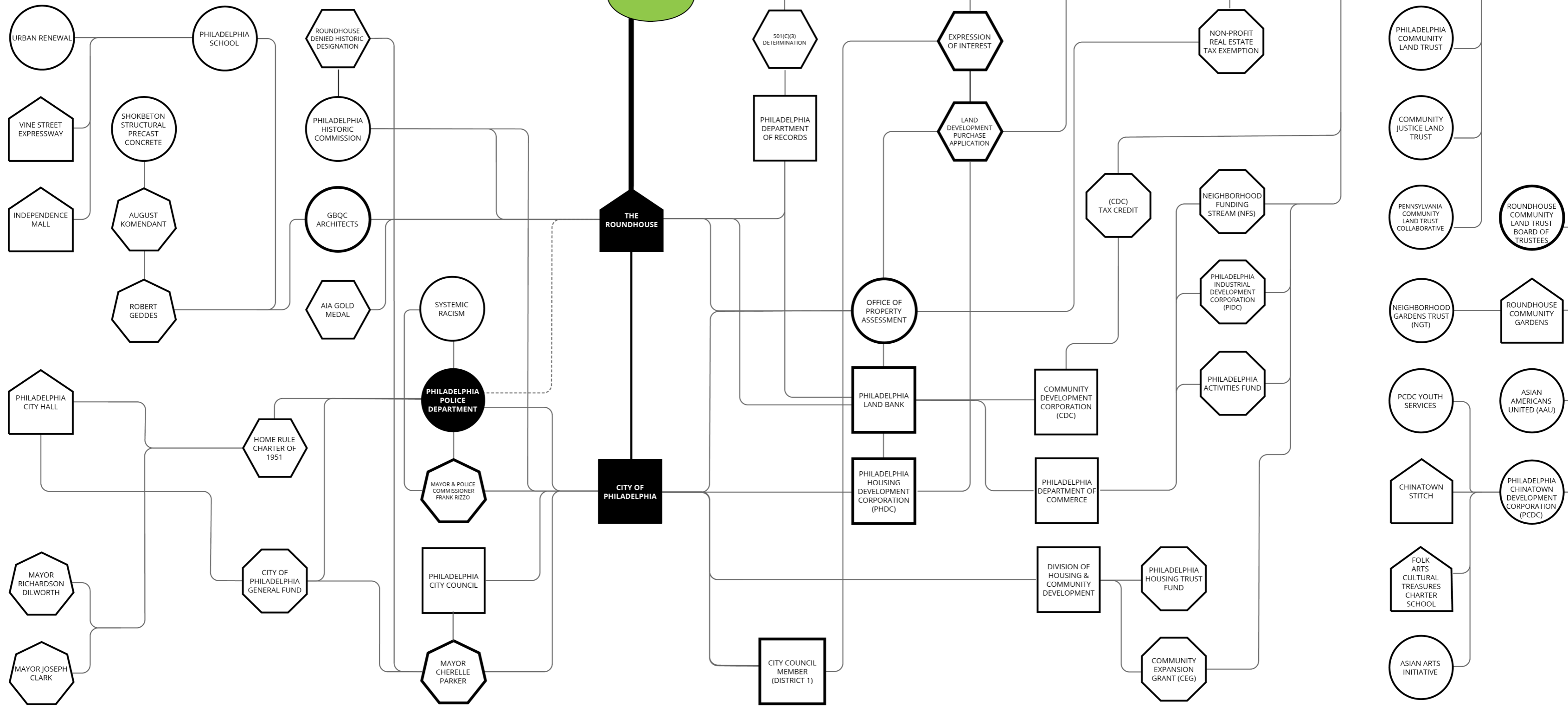
DOCUMENT



FUNDING



LOCATION

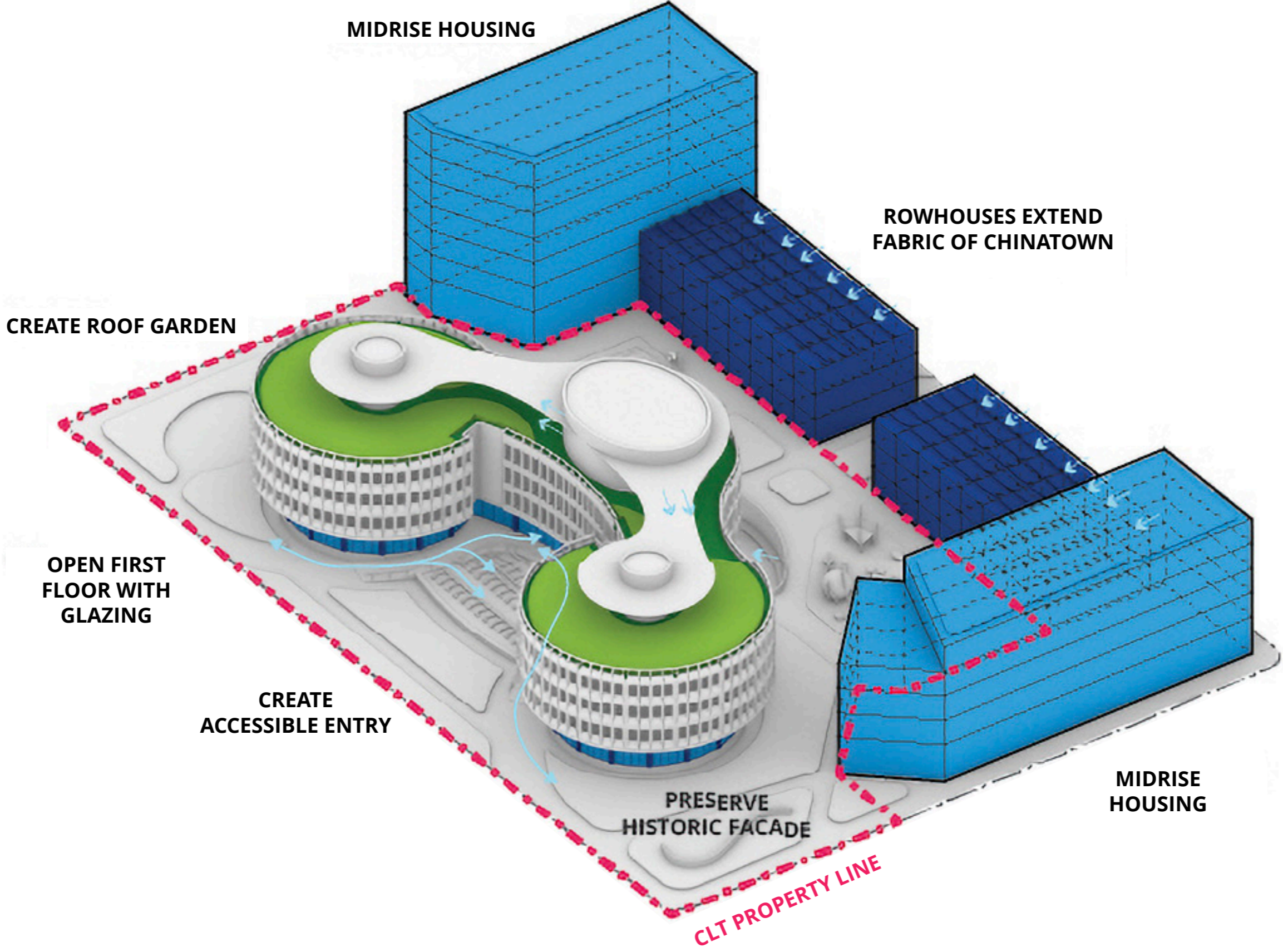


PAST ACTORS

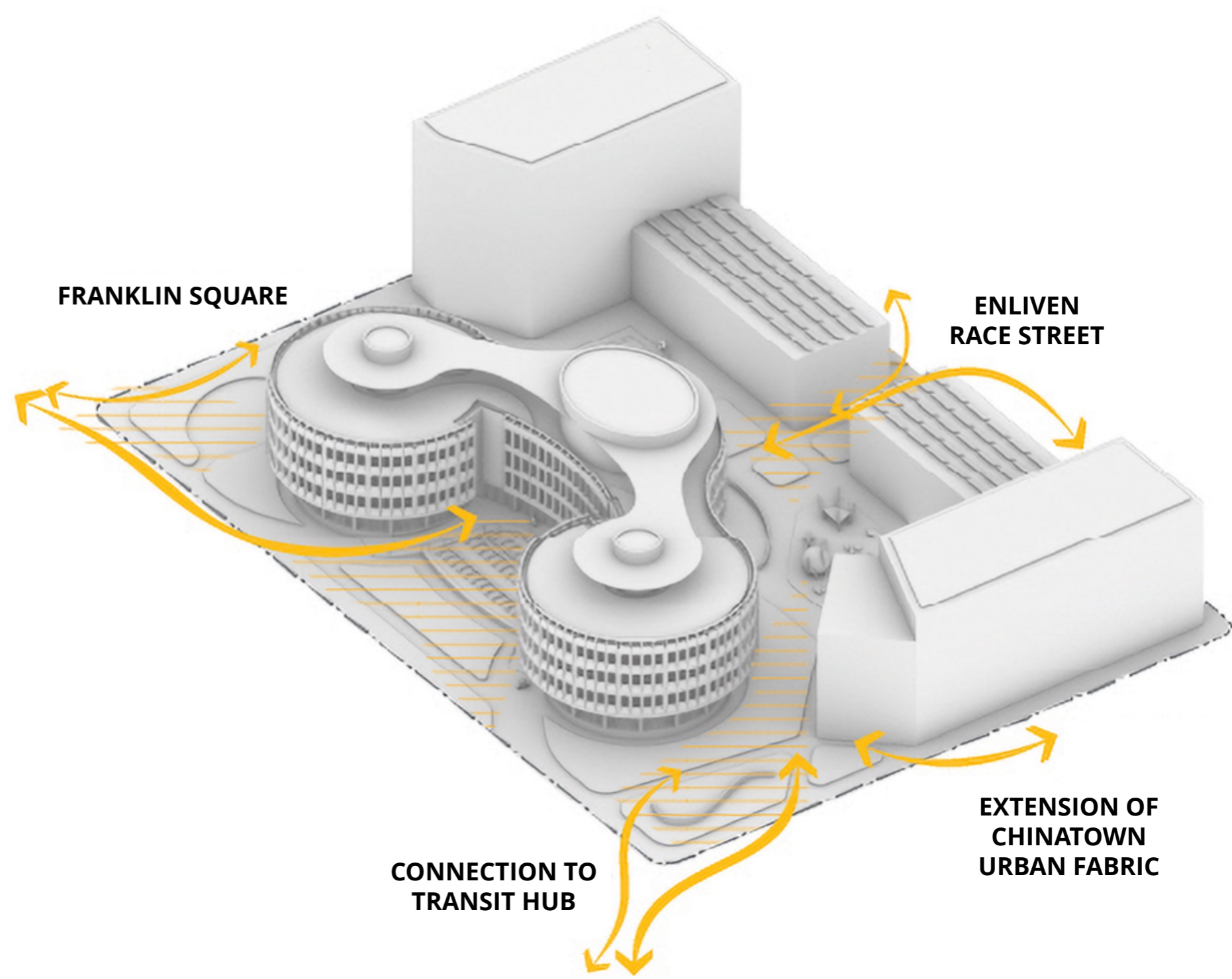
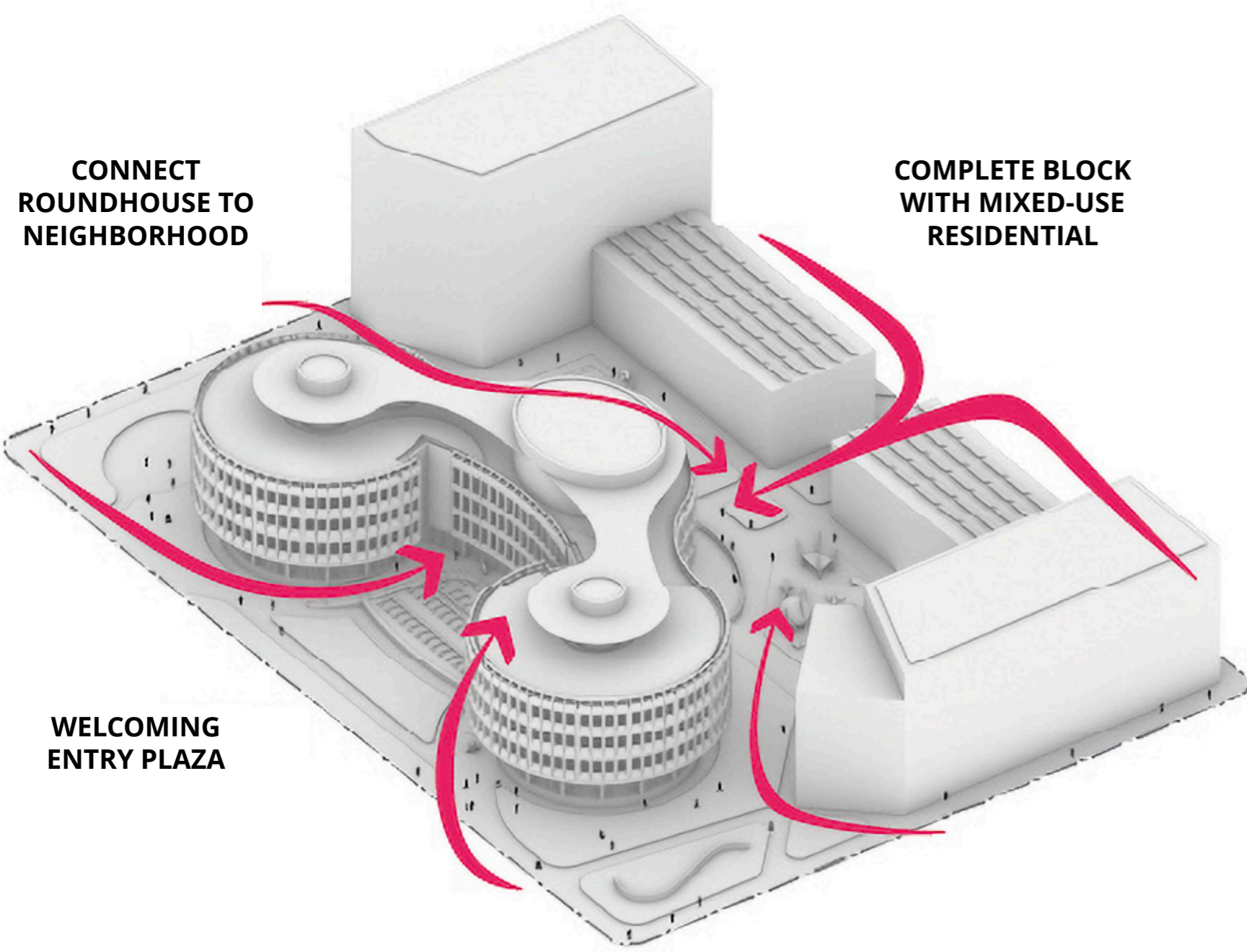
DEVELOPMENT ACTORS

FUTURE ACTORS

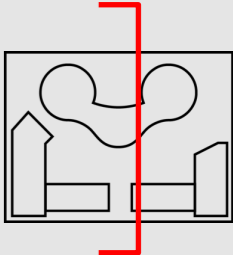
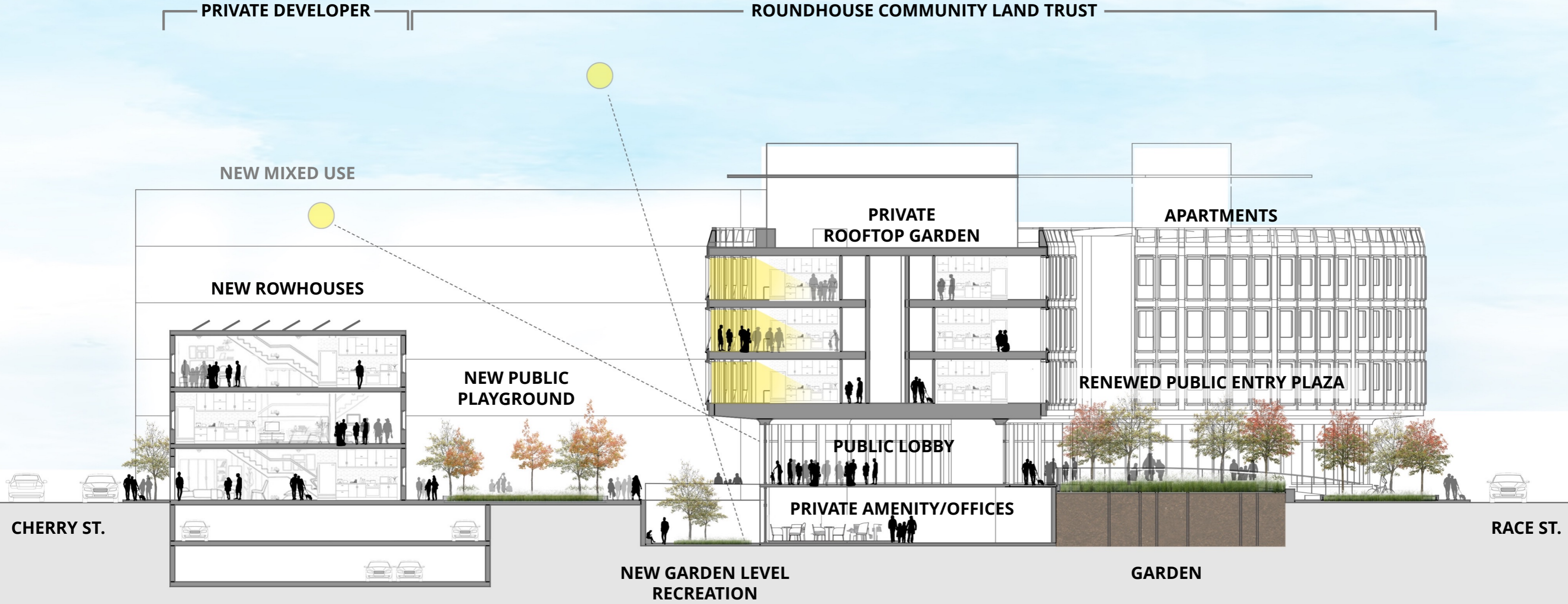
An Altogether New Context





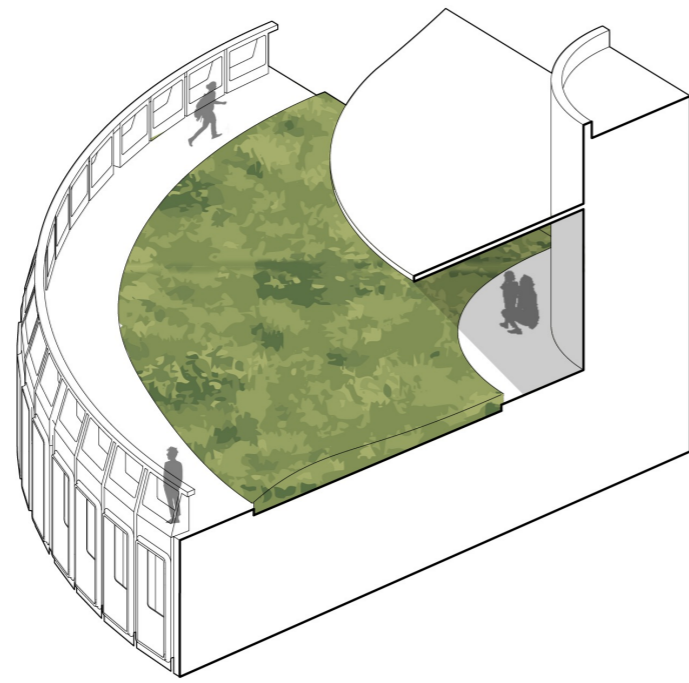


Reconciling Program

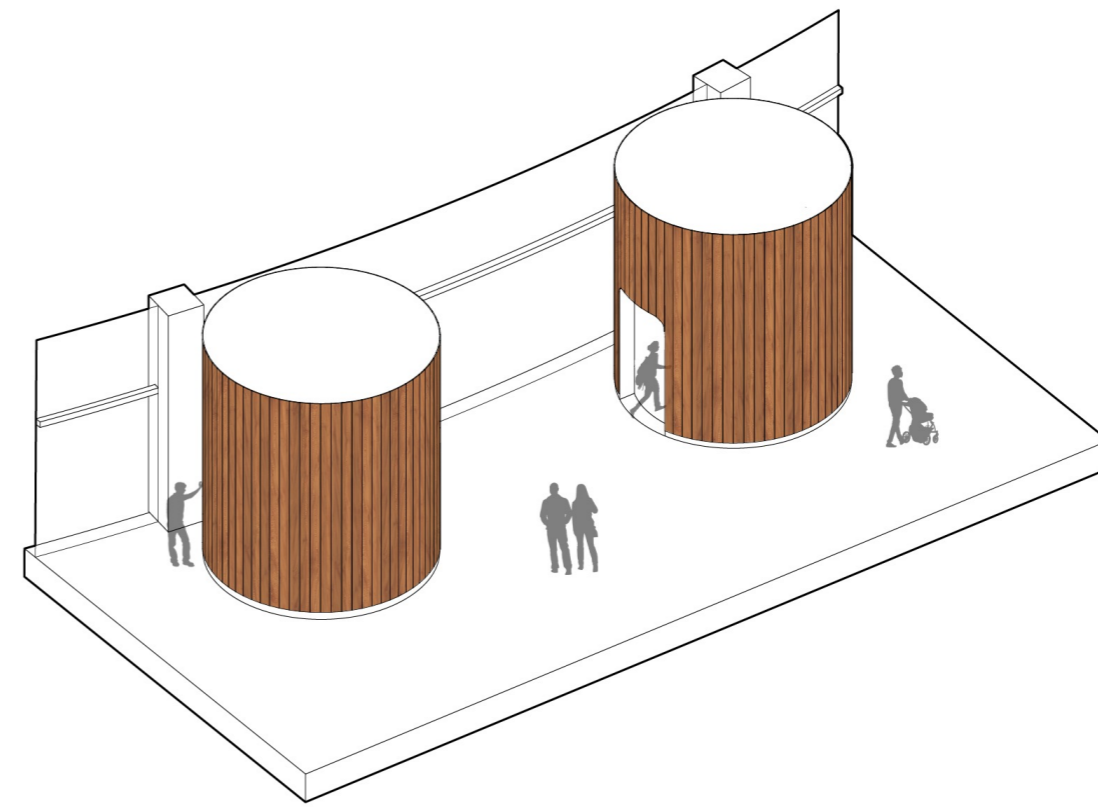




ROOF GARDEN



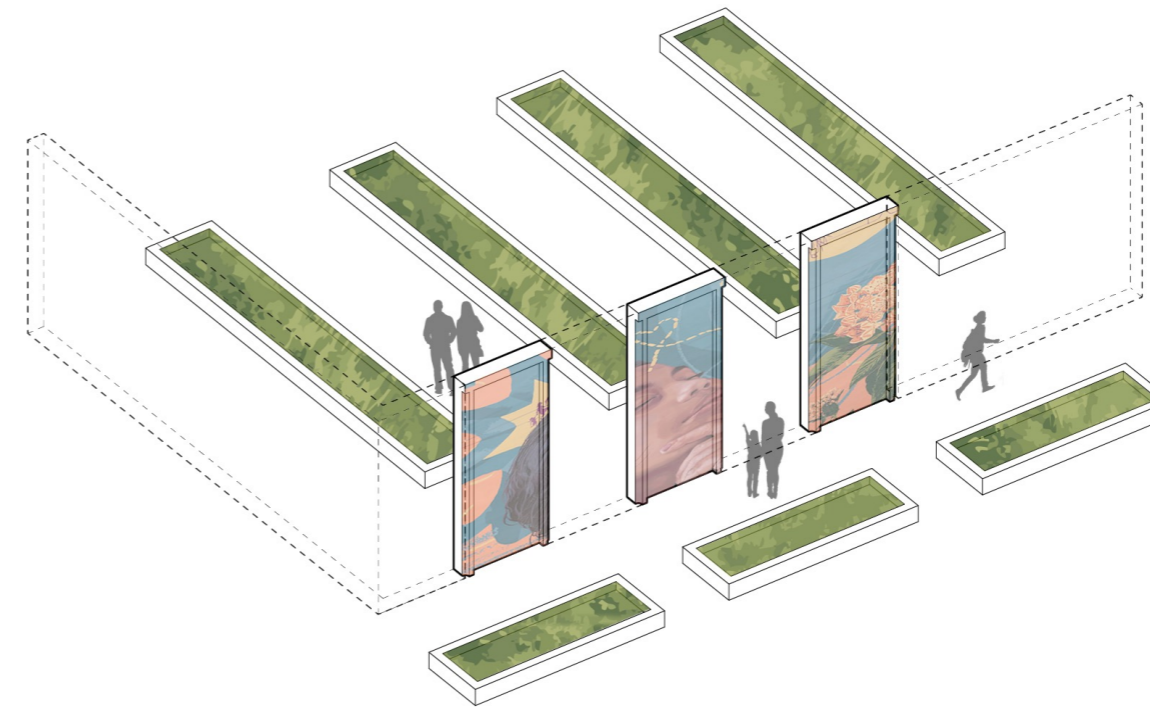
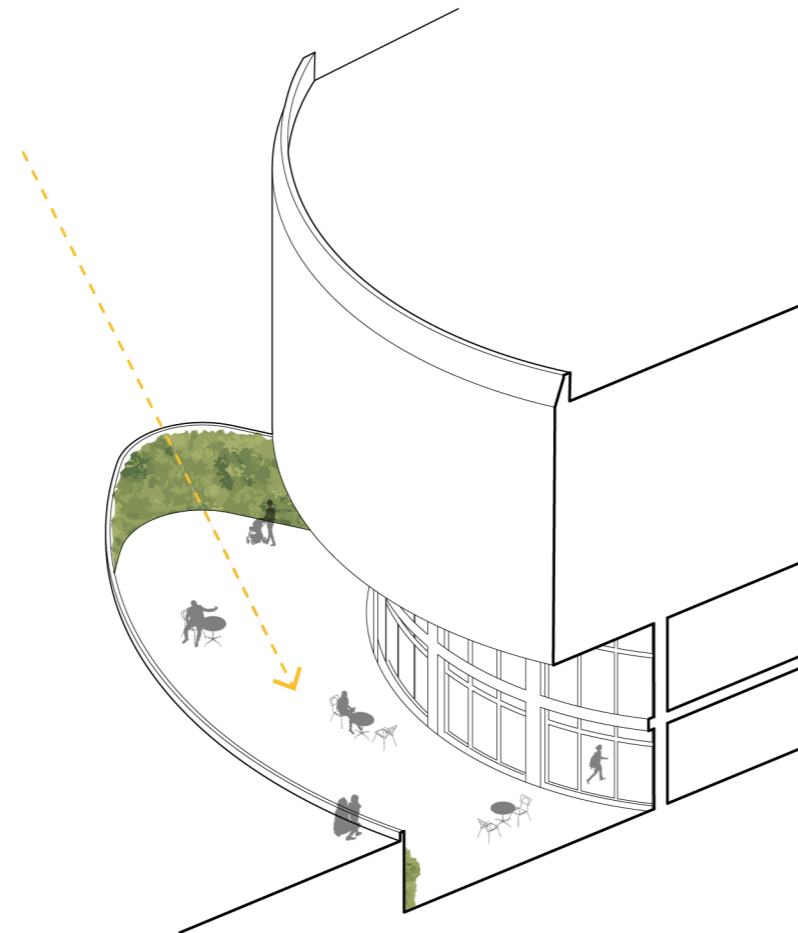
WOOD WALL PANELS



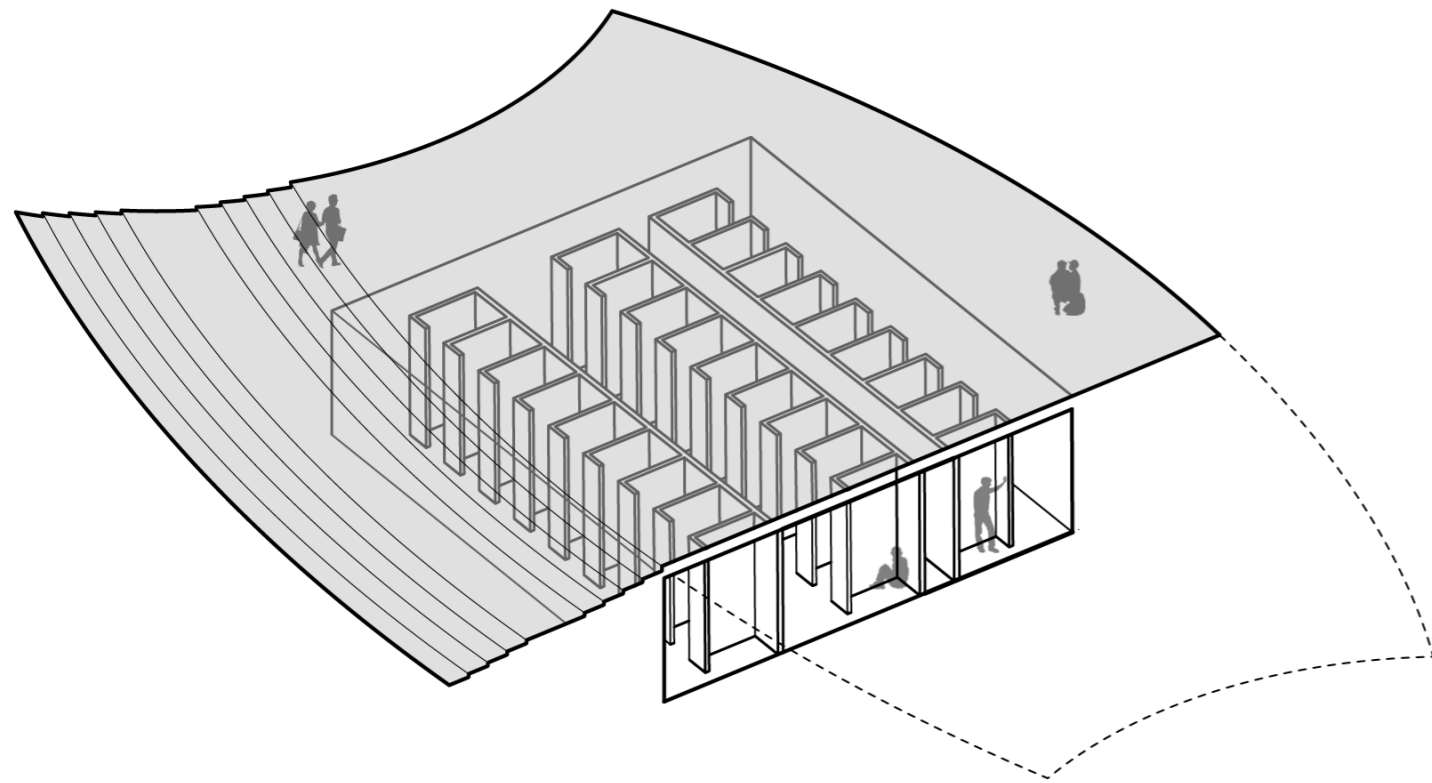
Intervention

Reuse

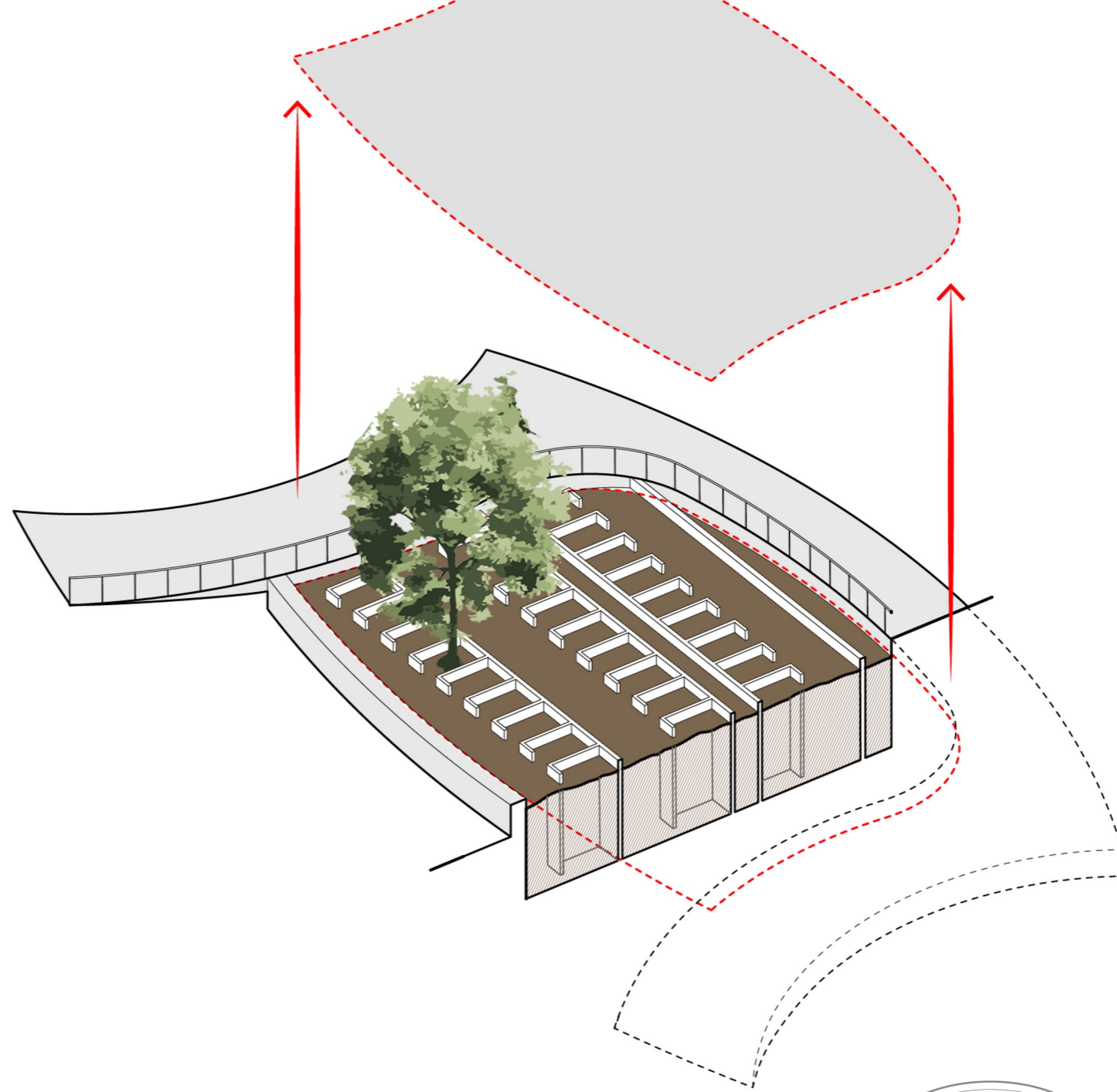
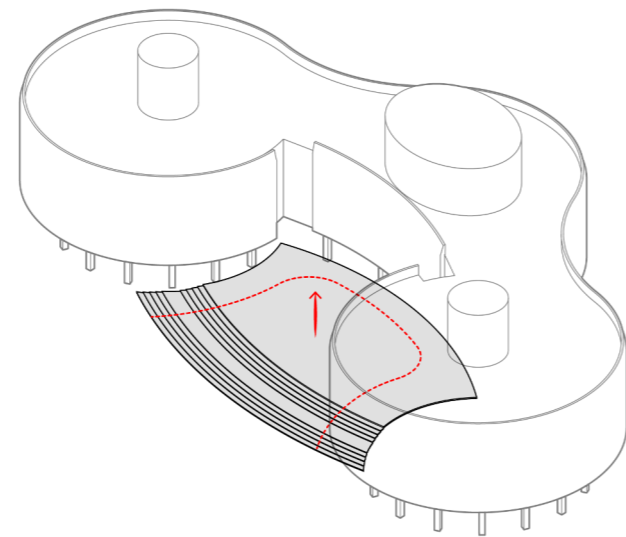
GARDEN LEVEL LIGHT WELL



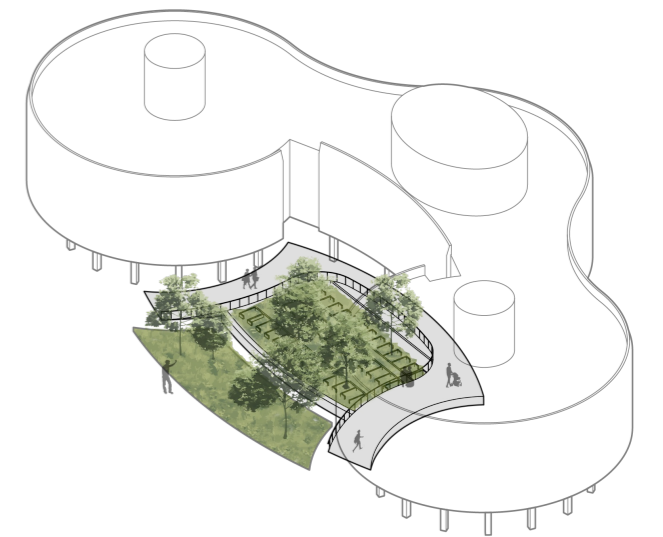
**EXISTING SITE WALL PANELS
BECOME COMMUNITY
GARDEN MURALS**



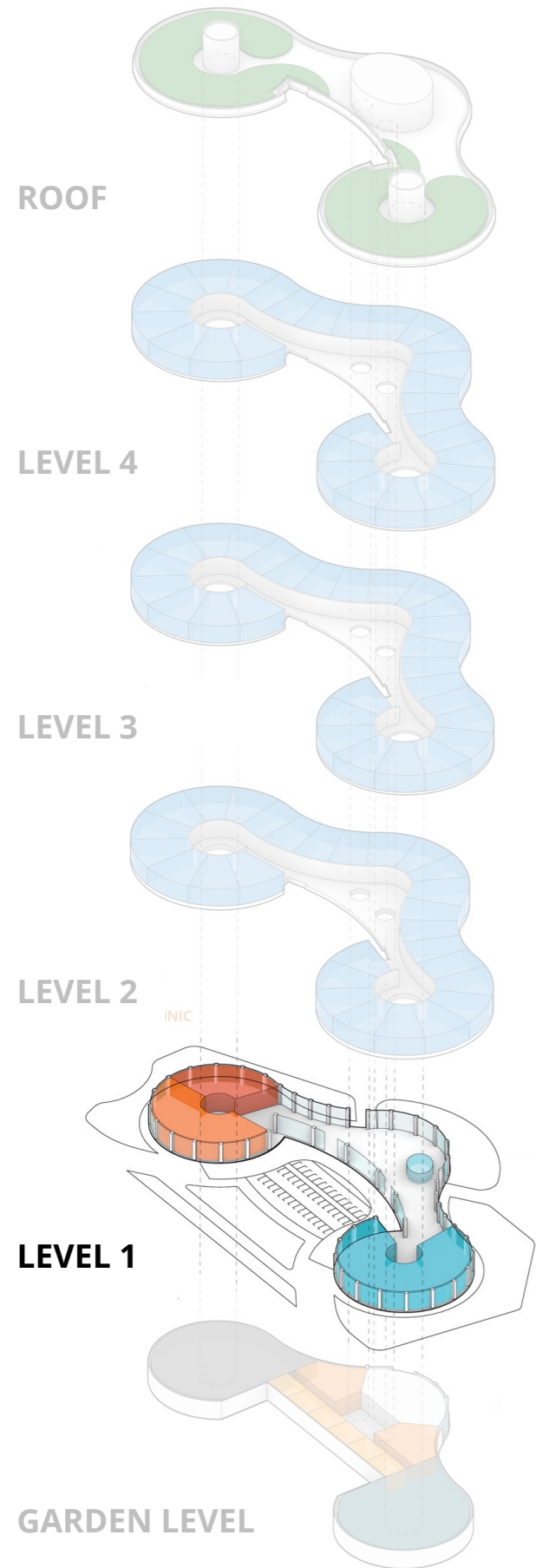
**HOLDING CELLS LOCATED
DIRECTLY UNDER THE
ENTRANCE PLAZA**



**REMOVING THE PLAZA
EXPOSES THE OUTLINE OF
THE CELL BLOCKS**







ROOF

LEVEL 4

LEVEL 3

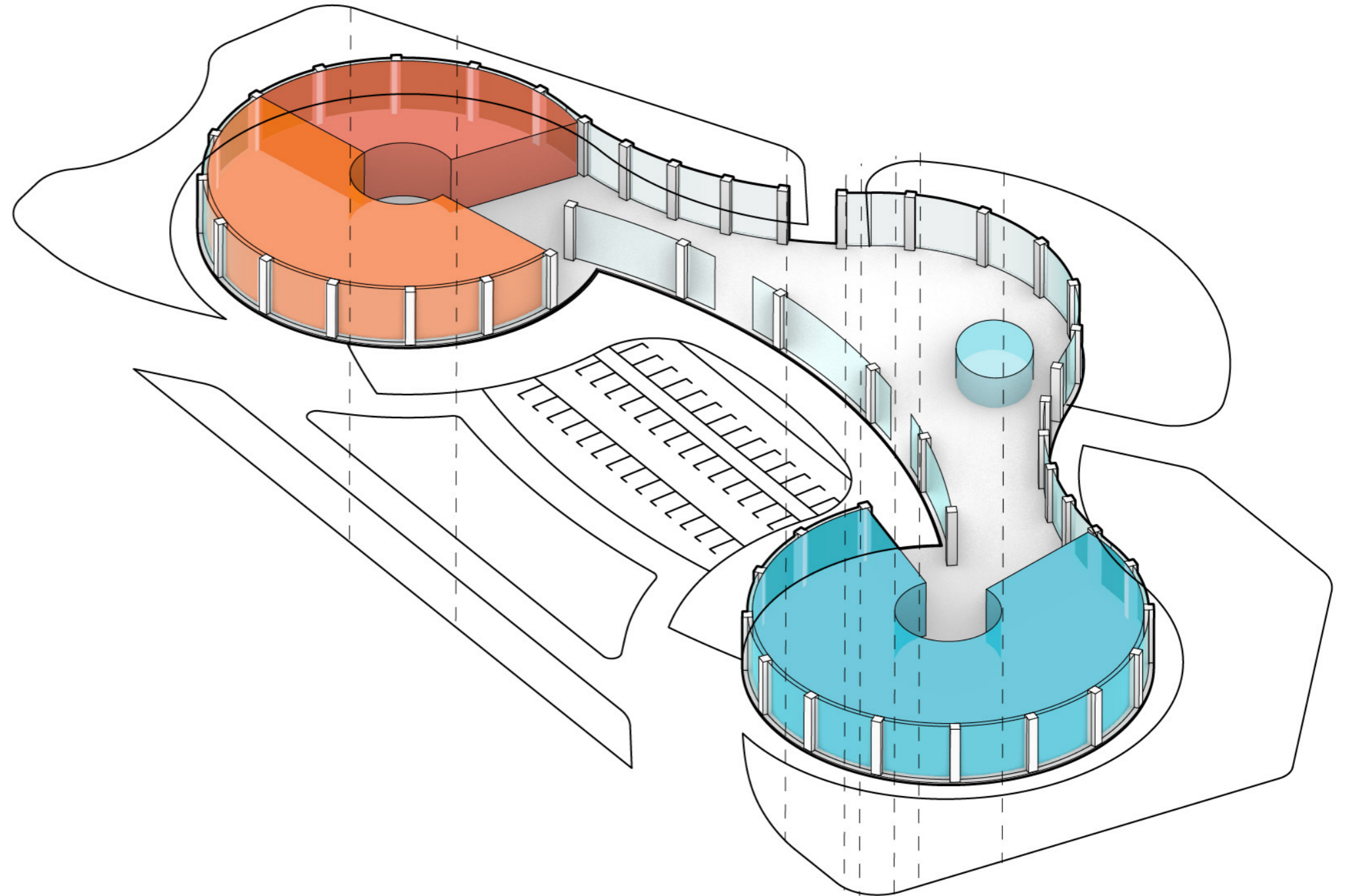
LEVEL 2

LEVEL 1

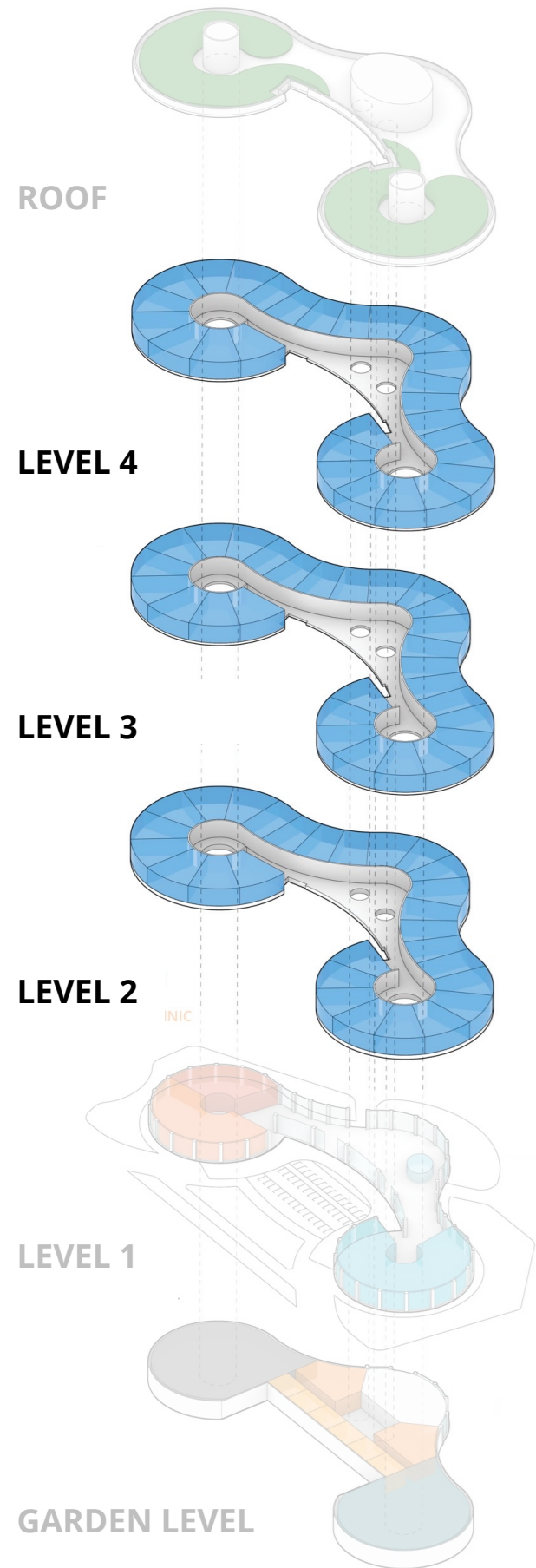
GARDEN LEVEL

LEGEND

- CLT OFFICE
- HEALTH CLINIC
- LOBBY CAFE
- URBAN GROCERY

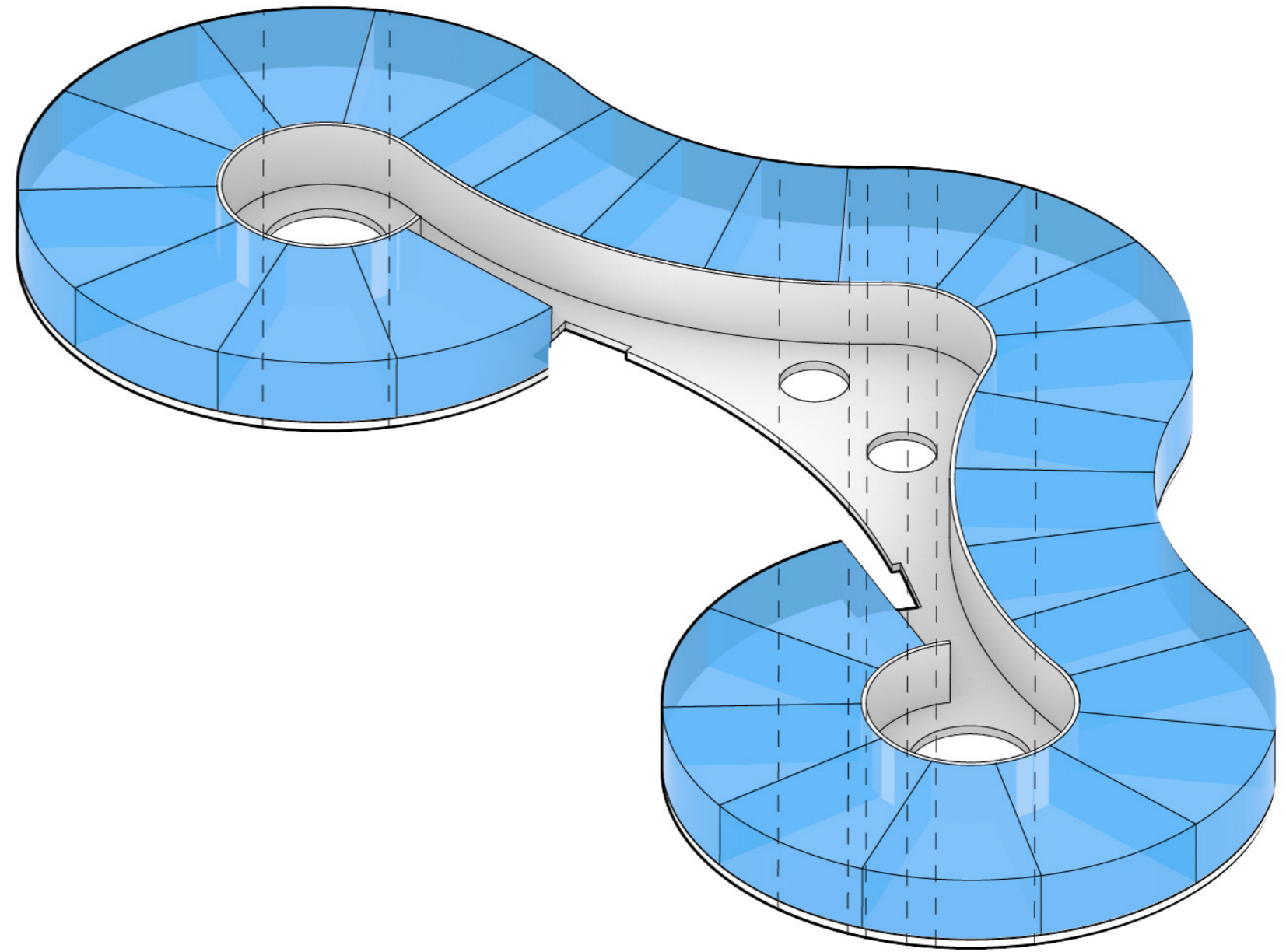


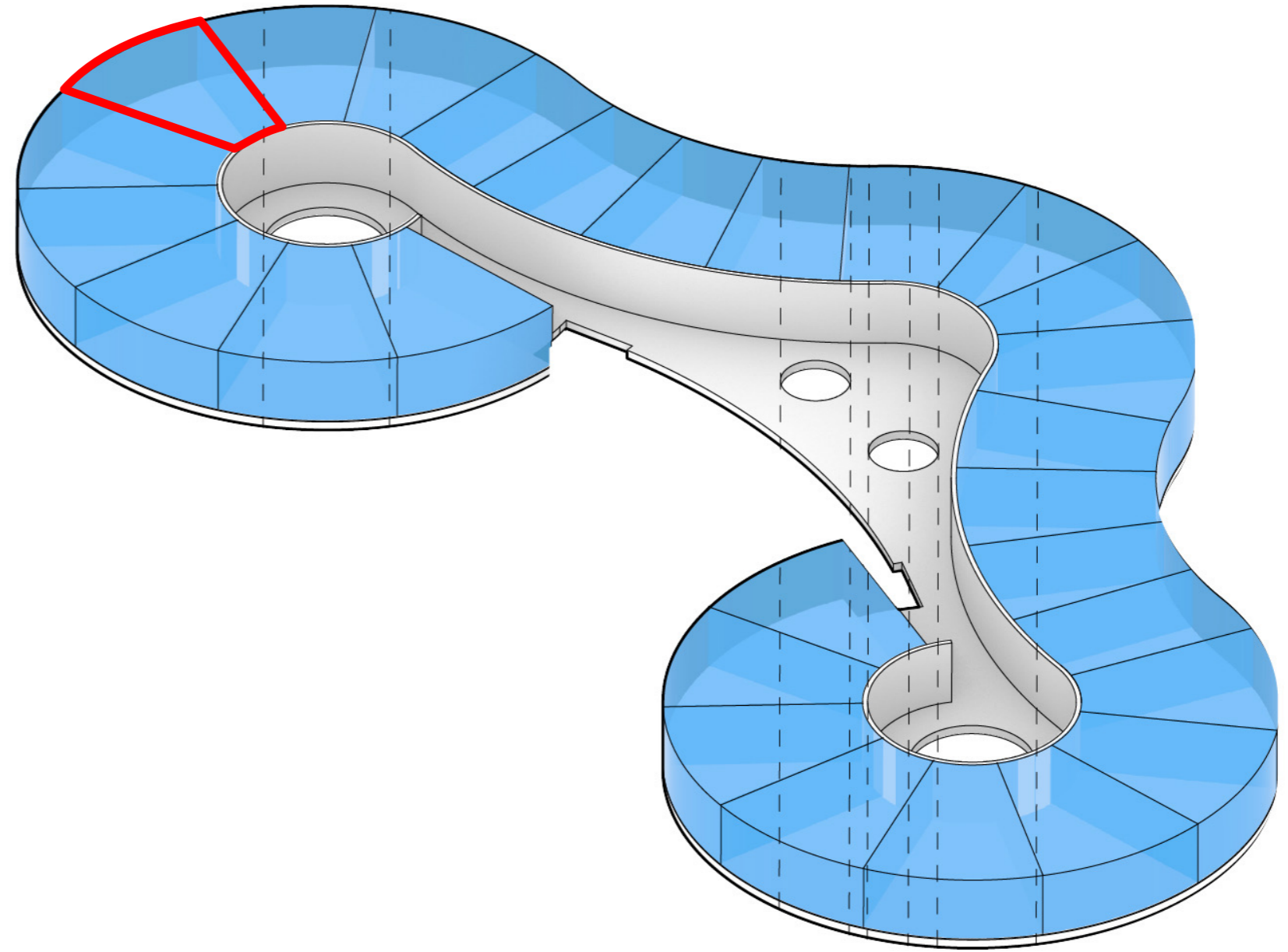
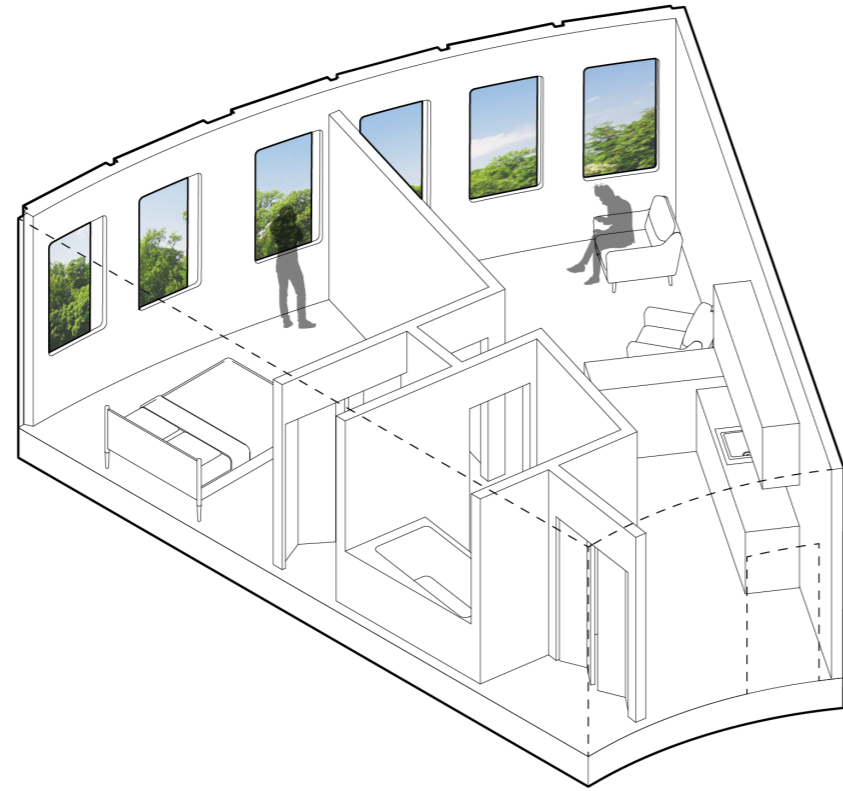
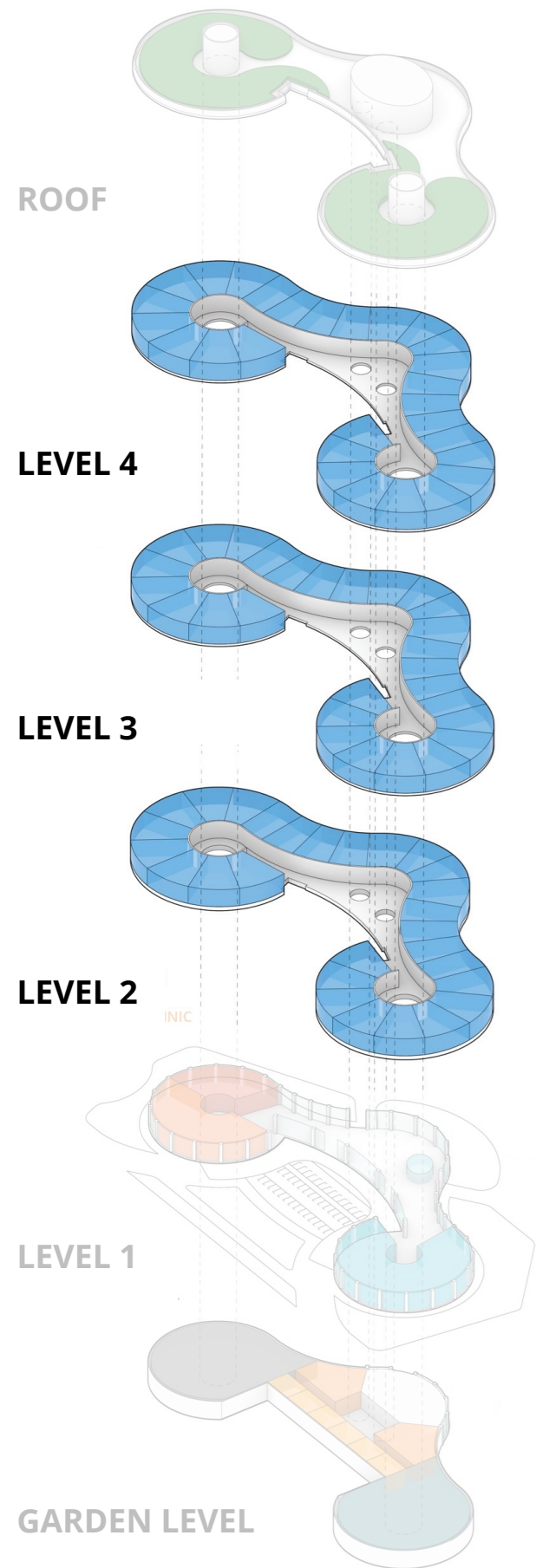




LEGEND

■ 84 UNITS AT 650 SF/UNIT
ACROSS THREE FLOOR





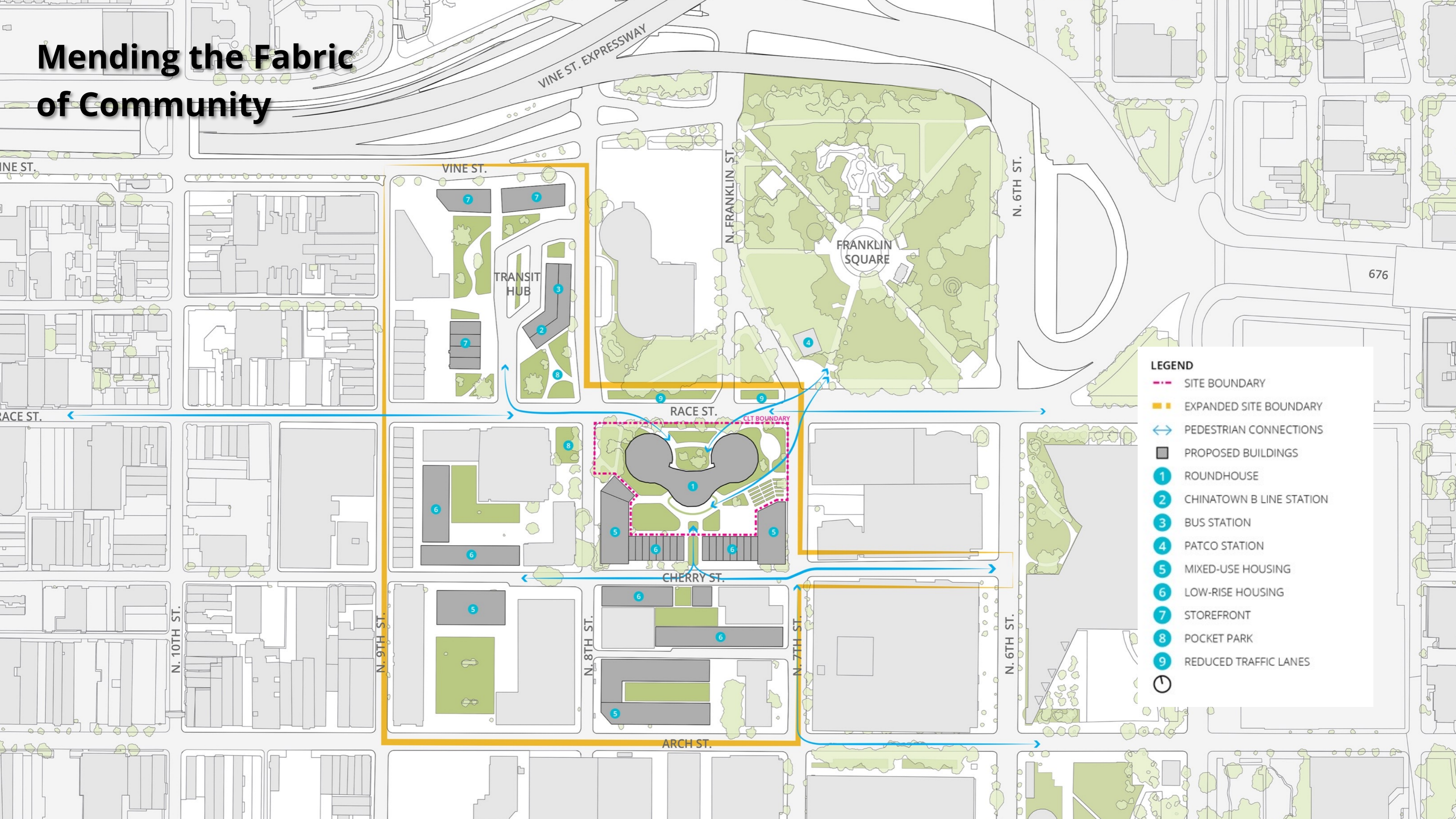
LEGEND

■ 84 UNITS AT 650 SF/UNIT
ACROSS THREE FLOOR



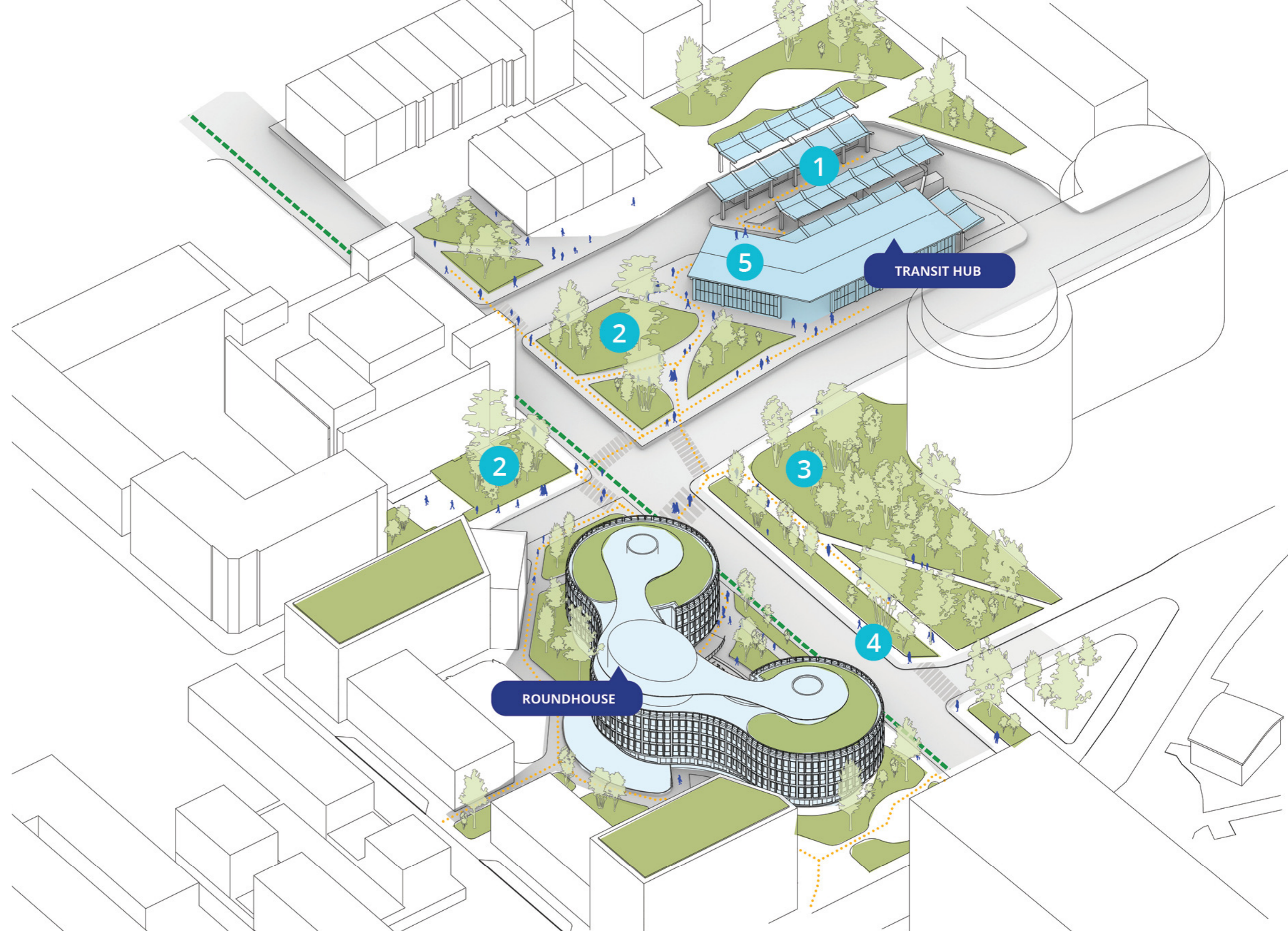


Mending the Fabric of Community



LEGEND

- SITE BOUNDARY
- EXPANDED SITE BOUNDARY
- ↔ PEDESTRIAN CONNECTIONS
- PROPOSED BUILDINGS
- 1 ROUNDHOUSE
- 2 CHINATOWN B LINE STATION
- 3 BUS STATION
- 4 PATCO STATION
- 5 MIXED-USE HOUSING
- 6 LOW-RISE HOUSING
- 7 STOREFRONT
- 8 POCKET PARK
- 9 REDUCED TRAFFIC LANES
- 🕒



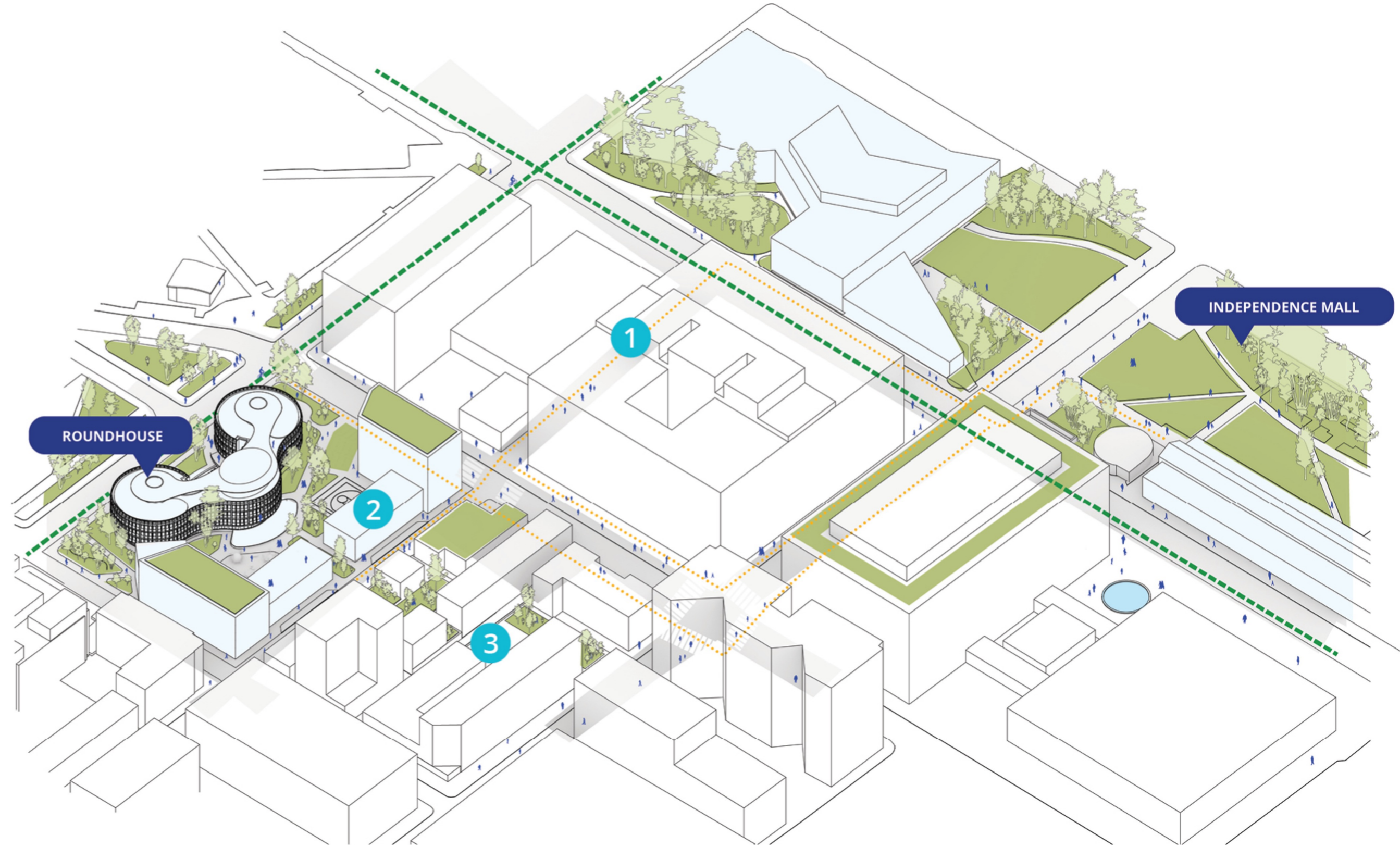
LEGEND

- 1. NEW TRANSIT HUB
- 2. POCKET PARK WITH PUBLIC ART
- 3. TRANSIT PARK GREENWAY
- 4. REDUCED TRAFFIC LANES
- 5. CHINATOWN B LINE STATION



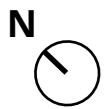
NEW TRANSIT HUB ACTIVATION



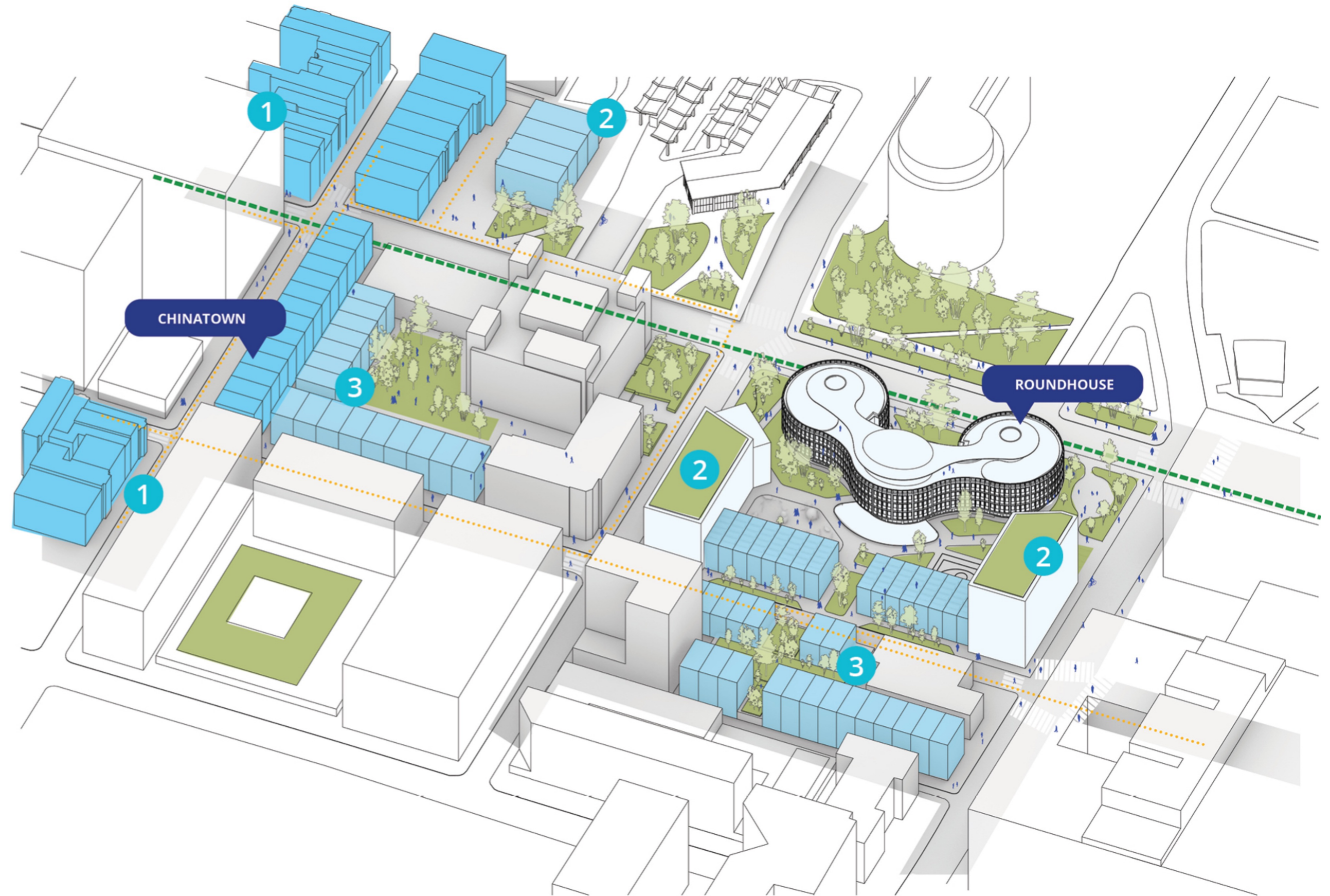


LEGEND

- 1. REESTABLISH CHERRY STREET CONNECTION
- 2. NEW RESIDENTIAL SCALE DEVELOPMENT
- 3. URBAN GREEN INFILL PARKS



INDEPENDENCE MALL CONNECTION

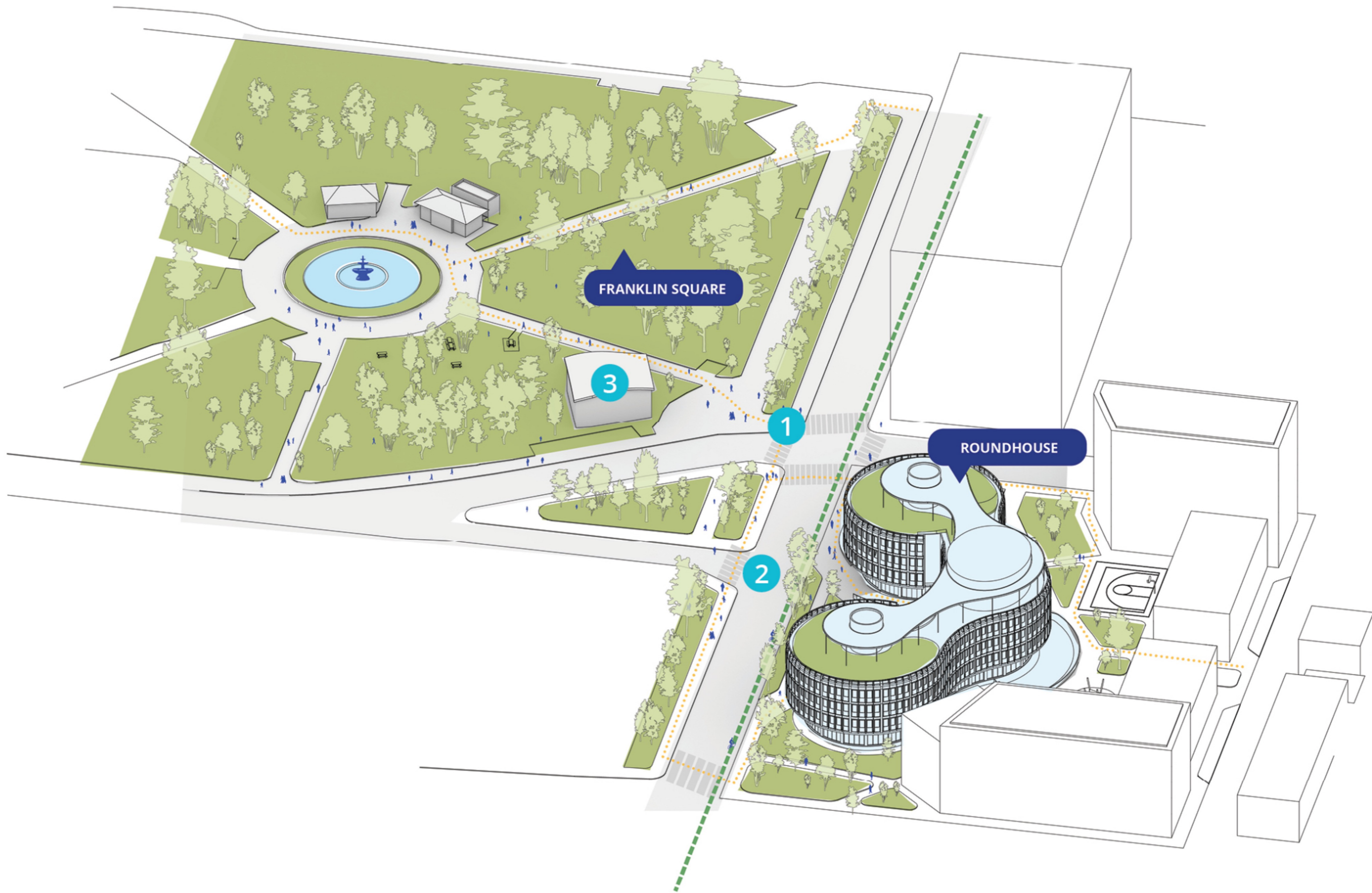


LEGEND

- 1. EXISTING HOUSE
- 2. PROPOSED MIXED-USE
- 3. PROPOSED HOUSING



CHINATOWN GATEWAY URBAN DENSIFICATION



LEGEND

- 1. "SHARED STREET" EXPANDED CURB
- 2. REDUCED TRAFFIC LANES
- 3. PATCO STATION



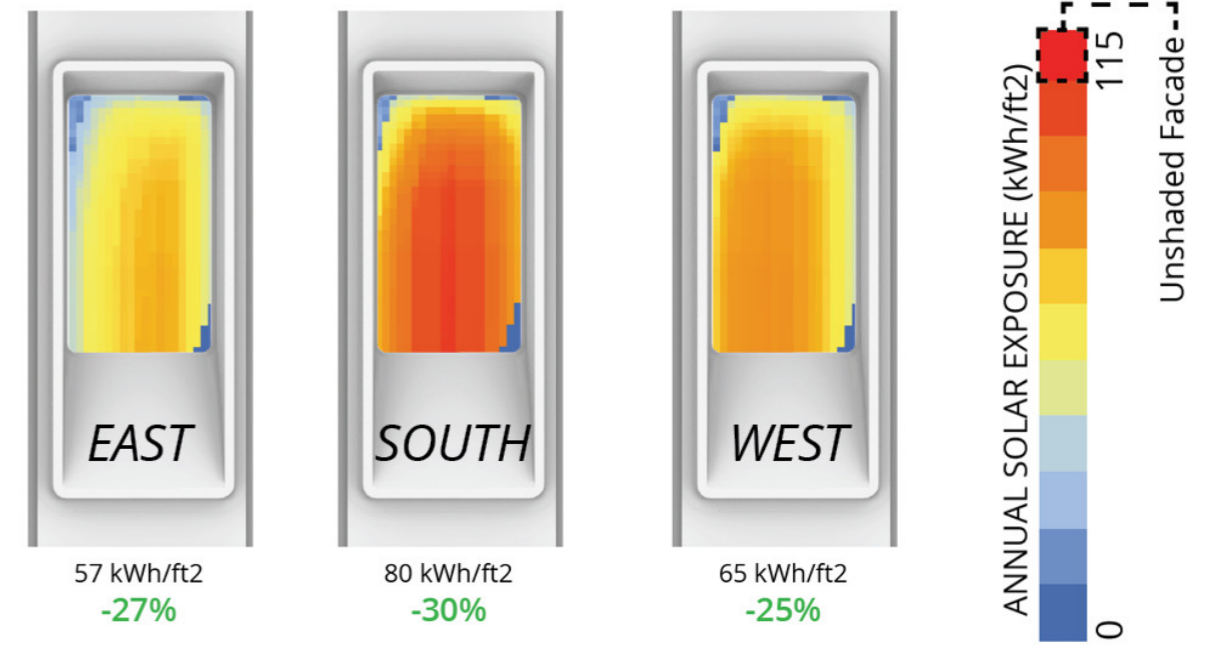
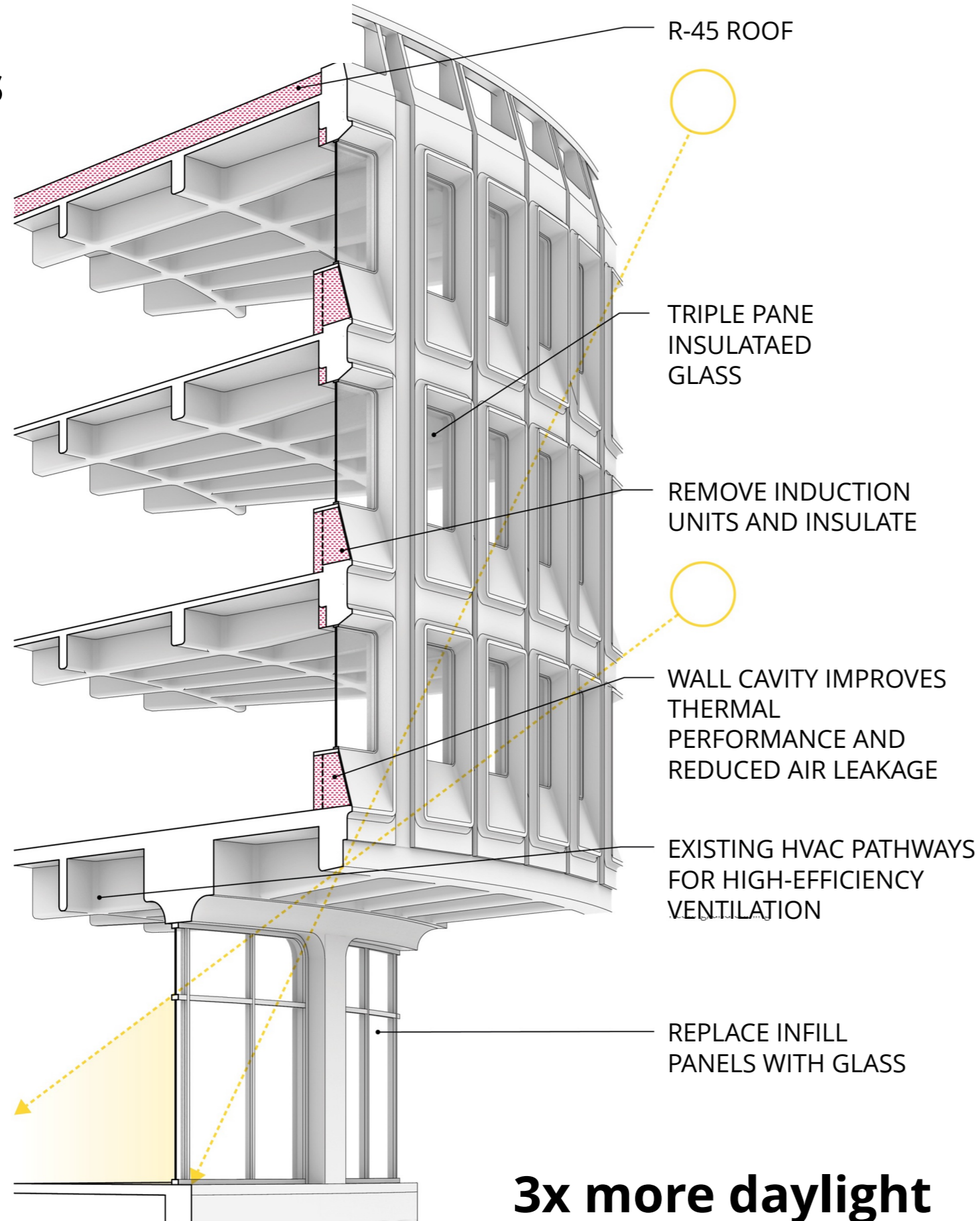
FRANKLIN SQUARE CONNECTION PEDESTRIAN-ORIENTED DESIGN



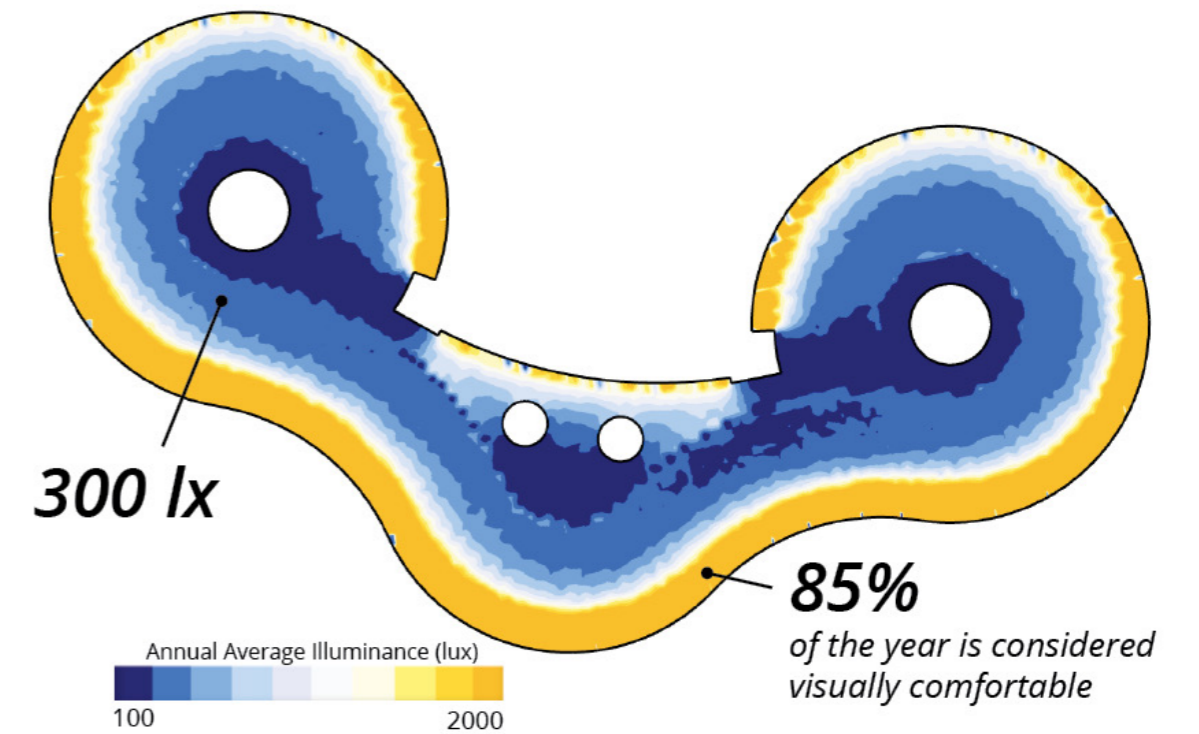
Climate and Community Stewardship



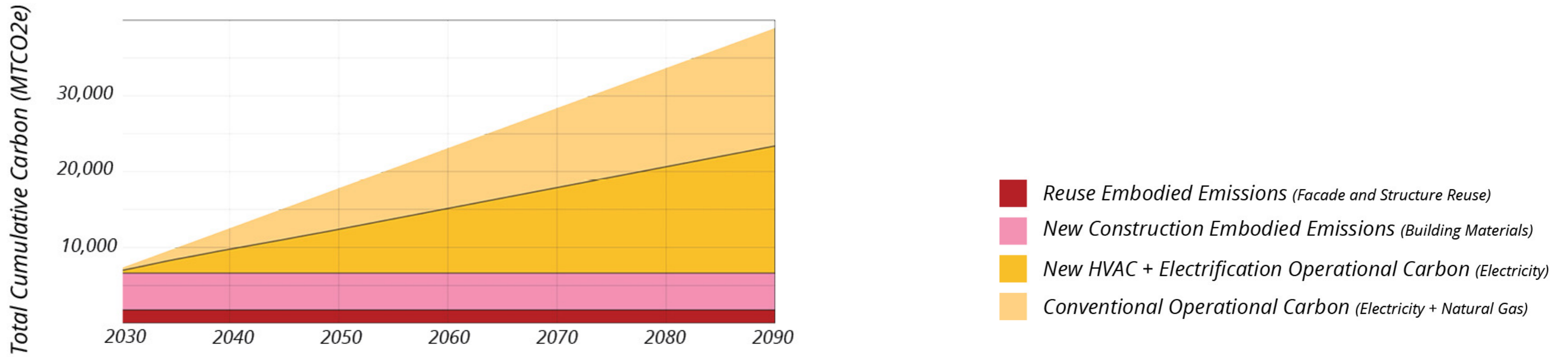
72% less heat loss



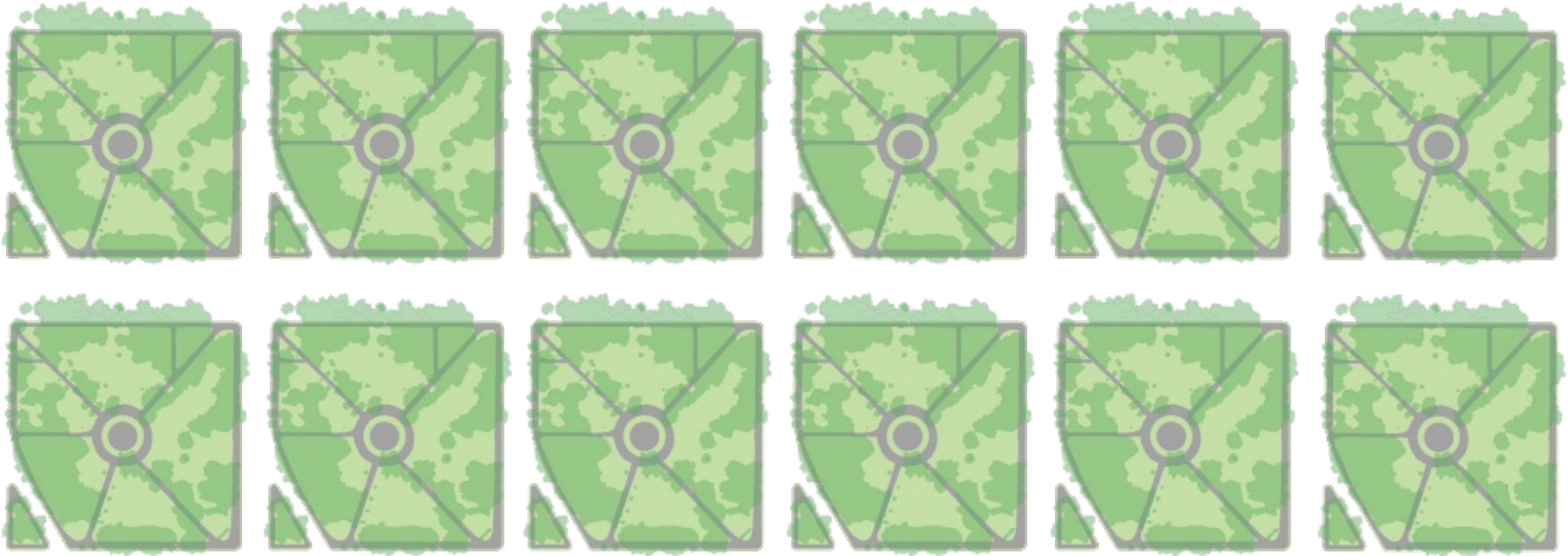
The facade panels are designed to self-shade, achieving levels of performance equal to contemporary high performance buildings.



Existing precast facade manages glare while permitting useful daylight throughout the footprint.



Reusing and electrifying the Roundhouse **saves approximately 20,000 MT of carbon** emissions over 60 years.



ENERGY, OPERATIONAL AND EMBODIED CARBON



Rooftop photovoltaic (PV) cells

PASSIVE DESIGN



Wind sheltering to improve outdoor comfort in winter



Natural daylight and glare control



Addition massing provides solar shading to reduce urban heat island

WATER EFFICIENCY AND MANAGEMENT



Underground stormwater retention cells



Rain gardens store excess rainfall



Permeable paving

PLANTS, LANDSCAPE, AND ECOLOGY



Improve wildlife habitat with green roofs



Increase biodiversity and expand urban tree canopy



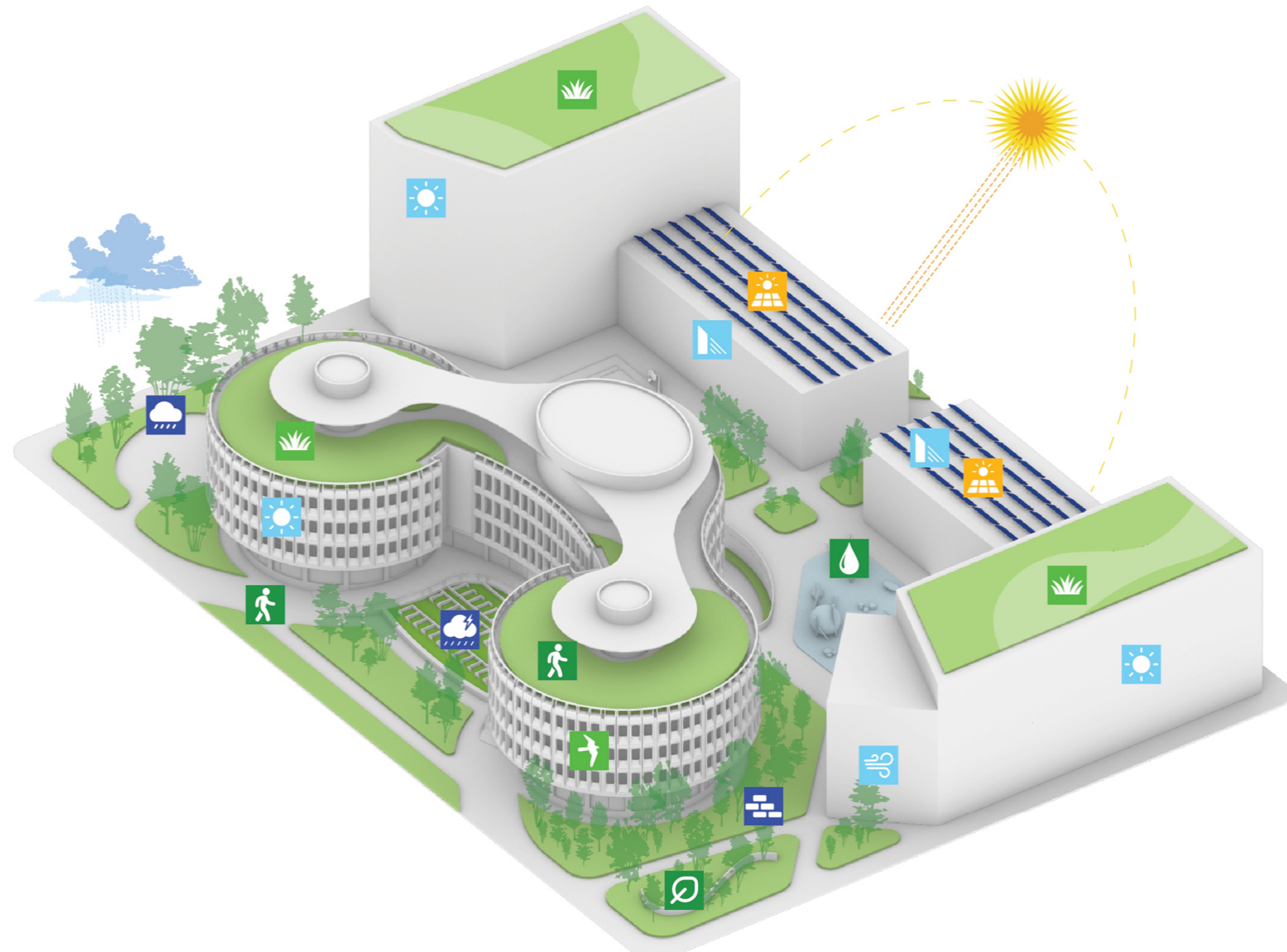
Preserving facade maintains bird-safe design



Accessibility, access, and walkability



Splashpad provides cooling relief during extreme heat





KIERANTIMBERLAKE

© 2025 KieranTimberlake LLC.
All Rights Reserved.